



شركة المصنع السعودي لأجهزة الإطفاء  
SAUDI FACTORY FOR FIRE EQUIPMENT Co.

Empowering  
a Safer Future for  
the Kingdom



# FIRE VALVES



NRS Gate Valves

Quality Approvals for Various Products and Services



# NRS Gate Valves

365 psi

Flanged-Ends

SF-GV-N-345-PFF

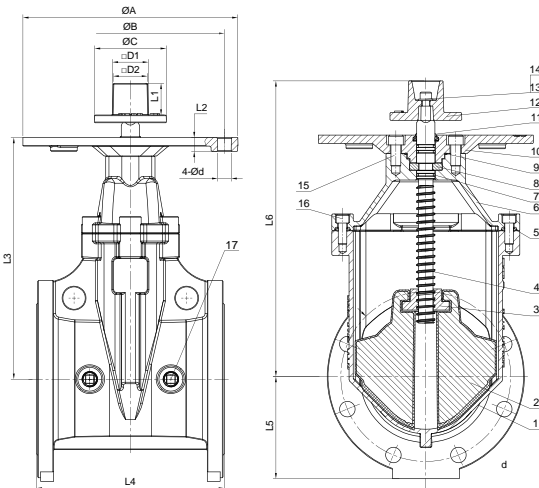


## Technical Specification:

- ❖ Valve Standard           UL262 / CUL262 / FM1120/1130
- ❖ Working Pressure        365PSI
- ❖ Working Temperature   4°C ~ 70°C
- ❖ Connection Ends        ANSI CLASS150  
(Other flanges are available on request)

## Material Specification:

No.	Part	Material	Specification
1	Body	Ductile Iron	ASTMA536 65-45-12
2	Resilient Wedge Disc	Ductile Iron	ASTMA536 65-45-12
3	Disc Nut	Bronze	ASTMB62 C83600
4	Stem	Stainless Steel	SS304
5	Sealing Gasket	EPDM	--
6	Bonnet	Ductile Iron	ASTMA536 65-45-12
7	O-Ring	EPDM	--
8	Split Ring	Bronze	ASTMB62 C83600
9	O-Ring	EPDM	--
10	Post Flange	Ductile Iron	ASTMA536 65-45-12
11	Dust Cover	EPDM	--
12	Square Head	Ductile Iron	ASTMA536 65-45-12
13	Screw	Carbon Steel	8.8
14	Flat Washer	Carbon Steel Galvanizing	--
15	Screw	Carbon Steel	8.8
16	Screw	Carbon Steel	12.9
17	Square Plug	Stainless Steel	SS304



## Dimension:

DN	INCH	øA	øB	øC	□ D1	□ D2	L1 (mm)	L2 (mm)	L3 (mm)	L4 (mm)	L5 (mm)	L6 (mm)	4-ød
50*	2"	ø305	ø267	ø102	51	49	45	18	197	178	88	263	4-ø19
65**	2½"	ø305	ø267	ø102	51	49	45	18	196.5	191	95	263	4-ø19
80**	3"	ø305	ø267	ø102	51	49	45	18	224	203	100	293	4-ø19
100**	4"	ø305	ø267	ø102	51	49	45	18	251	229	120	325.5	4-ø19
125**	5"	ø305	ø267	ø102	51	49	45	19.5	343	254	132.5	420	4-ø19
150**	6"	ø305	ø267	ø102	51	49	45	19.5	343	267	145	420	4-ø19
200**	8"	ø305	ø267	ø102	51	49	45	18	422.5	292	175	506	4-ø19
250**	10"	ø305	ø267	ø102	51	49	45	18	534	330	207.5	610	4-ø19
300	12"	ø305	ø267	ø102	51	49	45	19.5	613	356	247.5	711	4-ø19

\* FM Approved

\*\* UL Listed & FM Approved

Rev:00-11-2025

T: 011 265 00 70  
www.sffeco.com

In keeping with our policy of continuous product improvement, SFFECO reserves the right to change specifications without prior notice.

شركة المصنع السعودي لأجهزة الإطفاء  
SAUDI FACTORY FOR FIRE EQUIPMENT Co.

# NRS Gate Valves

365 psi

Flange x Groove Ends

SF-GV-N-345-PFG

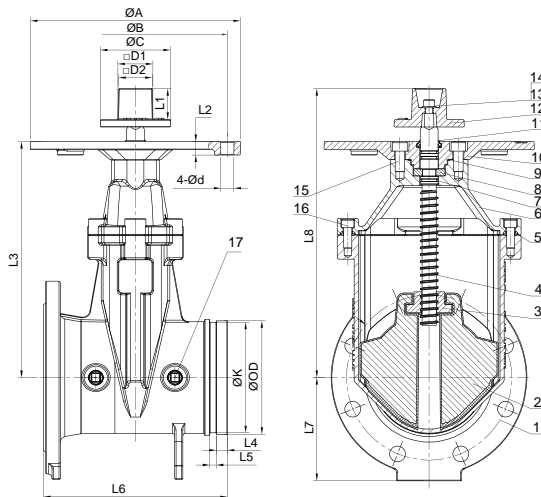


## Technical Specification:

- ❖ Valve Standard                   UL262 / CUL262 / FM1120/1130
- ❖ Working Pressure                365PSI
- ❖ Working Temperature        4°C~ 70°C
- ❖ Connection Ends               ANSI CLASS150, AWWA C 606

## Material Specification:

No.	Part	Material	Specification
1	Body	Ductile Iron	ASTM A536 65-45-12
2	Resilient Wedge Disc	Ductile Iron	ASTM A536 65-45-12
3	Disc Nut	Bronze	ASTM B62 C83600
4	Stem	Stainless Steel	SS304
5	Sealing Gasket	EPDM	--
6	Bonnet	Ductile Iron	ASTM A536 65-45-12
7	O-Ring	EPDM	--
8	Split Ring	Bronze	ASTM B62 C83600
9	O-Ring	EPDM	--
10	Post Flange	Ductile Iron	ASTM A536 65-45-12
11	Dust Cover	EPDM	--
12	Square Head	Ductile Iron	ASTM A536 65-45-12
13	Screw	Carbon Steel	8.8
14	Flat Washer	Carbon Steel Galvanizing	--
15	Screw	Carbon Steel	8.8
16	Screw	Carbon Steel	12.9
17	Square Plug	Stainless Steel	SS304



## Dimension:

DN	INCH	AWWA C606/ VDS 2100		øA	øB	□ D1	□ D2	L1 (mm)	L2 (mm)	L3 (mm)	L4 (mm)	L5 (mm)	L6 (mm)	L7 (mm)	L8 (mm)
		øOD	øK												
50*	2"	ø60.3	ø57.15	ø305	ø267	51	49	45	18	197	15.88	7.93	178	86	263
65**	2½"	ø73	ø69.09	ø305	ø267	51	49	45	18	196.5	15.88	7.93	191	95	263
80**	3"	ø89	ø85	ø305	ø267	51	49	45	18	224	15.88	7.93	203	105	293
100**	4"	ø114.3	ø110.08	ø305	ø267	51	49	45	18	251	15.88	9.53	229	120	325.5
125**	5"	ø141.3	ø137	ø305	ø267	51	49	45	19.5	343	15.9	9.5	254	133	420
150**	6"	ø168.3	ø164	ø305	ø267	51	49	45	19.5	343	15.88	9.53	267	148	420
200**	8"	ø219.1	ø214.1	ø305	ø267	51	49	45	18	422.5	19	12	292	176	506
250**	10"	ø273	ø268	ø305	ø267	51	49	45	18	534	19	12.7	330	208	610
300**	12"	ø323.9	ø317.9	ø305	ø267	51	49	45	19.5	613	19	12.7	356	246	711

\* FM Approved

\*\* UL Listed & FM Approved

Rev.00-11-2025

T: 011 265 00 70  
www.sffeco.com

In keeping with our policy of continuous product improvement, SFFECO reserves the right to change specifications without prior notice.

شركة المصنع السعودي لأجهزة الإطفاء  
SAUDI FACTORY FOR FIRE EQUIPMENT Co.

# NRS Gate Valves

365 psi

Groove x Groove Ends

SF-GV-N-345-PGG

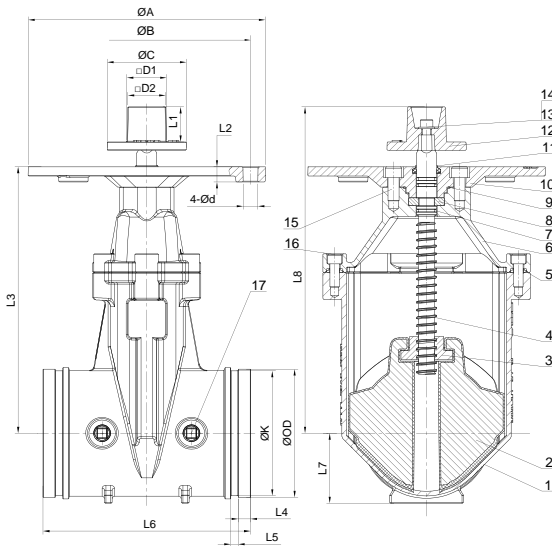


## Technical Specification:

- ❖ Valve Standard           UL262 / CUL262 / FM1120/1130
- ❖ Working Pressure        365PSI
- ❖ Working Temperature   4°C ~ 70°C
- ❖ Connection Ends        AWWAC 606

## Material Specification:

No.	Part	Material	Specification
1	Body	Ductile Iron	ASTMA536 65-45-12
2	Resilient Wedge Disc	Ductile Iron	ASTMA536 65-45-12
3	Disc Nut	Bronze	ASTMB62 C83600
4	Stem	Stainless Steel	SS304
5	Sealing Gasket	EPDM	--
6	Bonnet	Ductile Iron	ASTMA536 65-45-12
7	O-Ring	EPDM	--
8	Split Ring	Bronze	ASTMB62 C83600
9	O-Ring	EPDM	--
10	Post Flange	Ductile Iron	ASTMA536 65-45-12
11	Dust Cover	EPDM	--
12	Square Head	Ductile Iron	ASTMA536 65-45-12
13	Screw	Carbon Steel	8.8
14	Flat Washer	Carbon Steel Galvanizing	--
15	Screw	Carbon Steel	8.8
16	Screw	Carbon Steel	12.9
17	Square Plug	Stainless Steel	SS304



## Dimension:

DN	INCH	øA	øB	øC	□ D1	□ D2	4-ød	AWWAC606		L1 (mm)	L2 (mm)	L3 (mm)	L4 (mm)	L5 (mm)	L6 (mm)	L7 (mm)	L8 (mm)
								øK	øD								
50*	2"	ø305	ø267	ø102	51	49	4-ø19	ø57.15	ø60.3	45	18	197	15.9	7.93	178	43	263
65**	2½"	ø305	ø267	ø102	51	49	4-ø19	ø69.09	ø73	45	18	197	15.9	7.93	191	43	263
80**	3"	ø305	ø267	ø102	51	49	4-ø19	ø84.94	ø88.9	45	18	224	15.9	7.93	203	51	293
100**	4"	ø305	ø267	ø102	51	49	4-ø19	ø110.08	ø114.3	45	18	251	15.9	9.53	229	61	326
125**	5"	ø305	ø267	ø102	51	49	4-ø19	ø137	ø141.3	45	19.5	343	15.9	9.5	254	86	420
150**	6"	ø305	ø267	ø102	51	49	4-ø19	ø164	ø168.3	45	19.5	343	15.9	9.53	267	90	420
200**	8"	ø305	ø267	ø102	51	49	4-ø19	ø214.1	ø219.1	45	18	423	19	12	292	113	506
250**	10"	ø305	ø267	ø102	51	49	4-ø19	ø268	ø273	45	18	534	19	12.7	330	157	610
300**	12"	ø305	ø267	ø102	51	49	4-ø19	ø317.9	ø323.9	45	19.5	613	19	12.7	356	184	711

\* FM Approved

\*\* UL Listed & FM Approved

Rev.00-11-2025

T: 011 265 0070  
www.sffeco.com

In keeping with our policy of continuous product improvement, SFFECO reserves the right to change specifications without prior notice.

شركة المصنع السعودي لأجهزة الإطفاء  
SAUDI FACTORY FOR FIRE EQUIPMENT Co.

# NRS Gate Valves

365 psi

MJ x MJ Ends

SF-GV-N-345-PJJ

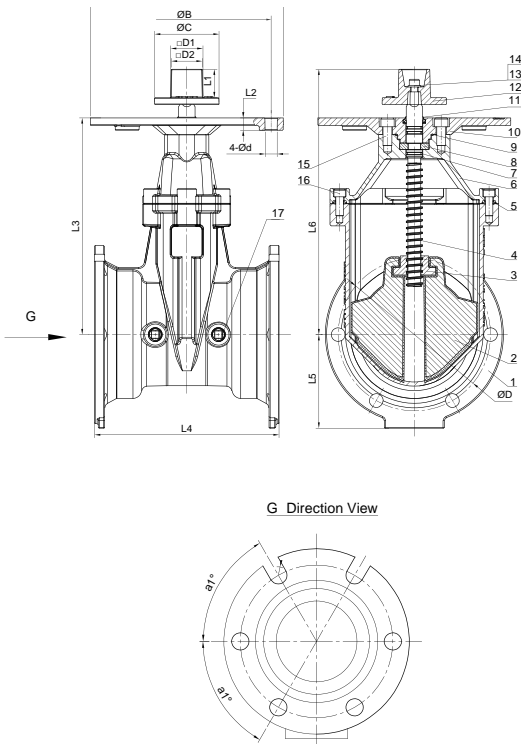


## Technical Specification:

- ❖ Valve Standard           UL262 / CUL262 / FM1120/1130
- ❖ Working Pressure        365PSI
- ❖ Working Temperature   4°C ~ 70°C
- ❖ Connection Ends         ANSI, AWWA C153

## Material Specification:

No.	Part	Material	Specification
1	Body	Ductile Iron	ASTMA536 65-45-12
2	Resilient Wedge Disc	Ductile Iron	ASTMA536 65-45-12
3	Disc Nut	Bronze	ASTMB62 C83600
4	Stem	Stainless Steel	SS304
5	Sealing Gasket	EPDM	--
6	Bonnet	Ductile Iron	ASTMA536 65-45-12
7	O-Ring	EPDM	--
8	Split Ring	Bronze	ASTMB62 C83600
9	O-Ring	EPDM	--
10	Post Flange	Ductile Iron	ASTMA536 65-45-12
11	Dust Cover	EPDM	--
12	Square Head	Ductile Iron	ASTMA536 65-45-12
13	Screw	Carbon Steel	8.8
14	Flat Washer	Carbon Steel Galvanizing	--
15	Screw	Carbon Steel	8.8
16	Screw	Carbon Steel	12.9
17	Square Plug	Stainless Steel	SS304



## Dimension:

DN	INCH	øA	øB	øC	□ D1	□ D2	L1 (mm)	L2 (mm)	L3 (mm)	L4 (mm)	L5 (mm)	L6 (mm)	4-ød	øD	a1°
80	3"	ø305	ø267	ø102	51	49	45	18	224	241	105	293	4-ø19	ø157	45°
100	4"	ø305	ø267	ø102	51	49	45	18	251	254	120	325.5	4-ø19	ø191	45°
150	6"	ø305	ø267	ø102	51	49	45	19.5	343	292	148	420	4-ø19	ø241	60°
200	8"	ø305	ø267	ø102	51	49	45	18	442.5	318	172.5	506	4-ø19	ø299	60°
250	10"	ø305	ø267	ø102	51	49	45	18	534	375	204.5	610	4-ø19	ø356	22.5°
300	12"	ø305	ø267	ø102	51	49	45	20	613	378	232	711	4-ø19	ø413	22.5°

Rev.00-11-2025

T: 011 265 00 70  
www.sffeco.com

In keeping with our policy of continuous product improvement, SFFECO reserves the right to change specifications without prior notice.

شركة المصنع السعودي لأجهزة الإطفاء  
SAUDI FACTORY FOR FIRE EQUIPMENT Co.

# NRS Gate Valves

365 psi

Flanged x MJ Ends

SF-GV-N-345-PFJ

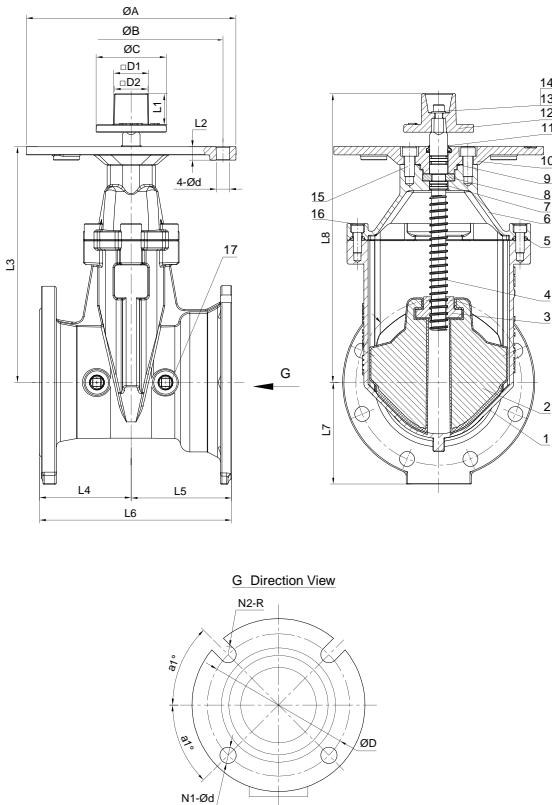


## Technical Specification:

- ❖ Valve Standard                   UL262 / CUL262 / FM1120/1130
- ❖ Working Pressure                365PSI
- ❖ Working Temperature         4°C~70°C
- ❖ Connection Ends                ANSI 150, AWWA C153

## Material Specification:

No.	Part	Material	Specification
1	Body	Ductile Iron	ASTM A536 65-45-12
2	Resilient Wedge Disc	Ductile Iron	ASTM A536 65-45-12
3	Stem Nut	Bronze	ASTM B62 C83600
4	Stem	Stainless Steel	SS304
5	Sealing Gasket	EPDM	--
6	Bonnet	Ductile Iron	ASTM A536 65-45-12
7	O-Ring	EPDM	--
8	Split Ring	Bronze	ASTM B62 C83600
9	O-Ring	EPDM	--
10	Post Flange	Ductile Iron	ASTM A536 65-45-12
11	Dust Cover	EPDM	--
12	Square Head	Ductile Iron	ASTM A536 65-45-12
13	Screw	Carbon Steel	8.8
14	Flat Washer	Carbon Steel Galvanizing	--
15	Screw	Carbon Steel	8.8
16	Screw	Carbon Steel	12.9
17	Square Plug	Stainless Steel	SS304



## Dimension:

DN	INCH	ØA	ØB	ØC	□D1	□D2	L1 (mm)	L2 (mm)	L3 (mm)	L4 (mm)	L5 (mm)	L6 (mm)	L7 (mm)	L8 (mm)	4-Ød	N1Ød	N2-R	a1°	ØD
80	3"	Ø305	Ø267	Ø102	51	49	45	18	224	102	121	222	105	293	4-Ø19	2-Ø19	2-R9.5	45°	Ø157
100	4"	Ø305	Ø267	Ø102	51	49	45	18	251	115	127	242	120	326	4-Ø19	2-Ø22	2-R11	45°	Ø191
150	6"	Ø305	Ø267	Ø102	51	49	45	19.5	343	134	146	280	148	420	4-Ø19	4-Ø22	2-R11	60°	Ø241
200	8"	Ø305	Ø267	Ø102	51	49	45	18	423	146	159	305	176	506	4-Ø19	4-Ø22	2-R11	60°	Ø299
250	10"	Ø305	Ø267	Ø102	51	49	45	18	534	165	188	353	205	610	4-Ø19	6-Ø22	2-R11	22.5°	Ø356
300	12"	Ø305	Ø267	Ø102	51	49	45	19.5	613	178	189	367	247	711	4-Ø19	4-Ø22	4-R11	22.5°	Ø413

Rev.00-11-2025

T: 011 265 00 70  
www.sffeco.com

In keeping with our policy of continuous product improvement, SFFECO reserves the right to change specifications without prior notice.

شركة المصنع السعودي لأجهزة الإطفاء  
SAUDI FACTORY FOR FIRE EQUIPMENT Co.

# NRS Gate Valves

## 200 / 250 / 300 psi



Resilient Seated - Flanged Ends

SF-GV-N-322-FF-200

SF-GV-N-322-FF-250

SF-GV-N-322-FF-300

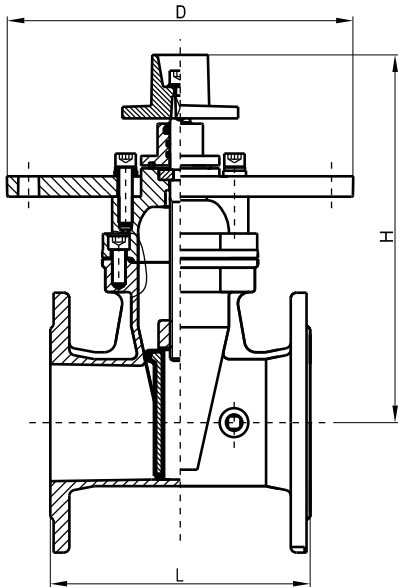


### Technical Specification:

- ❖ Valve Standard AWWA C515
- ❖ Fusion bonded coating comply with AWWA C550
- ❖ Test Standard UL1091 / FM1112
- ❖ Working Pressure 200PSI / 250PSI / 300PSI
- ❖ Working Temperature -10°C~120°C
- ❖ Connection Ends B16.42, CLASS150

### Material Specification:

No.	Part	Material	Specification
1	Body	Ductile Iron	A536 65-45-12
2	Wedge Disc	Ductile Iron	EPDM Coated
3	Disc Nut	Bronze	ASTM B62
4	Stem	Stainless Steel	AISI 304/420
5	Gasket	EPDM	Commercial
6	Bonnet	Ductile Iron	A536 65-45-12
7	Thrust Collar	Bronze	ASTM C51100
8	Gland	Ductile Iron	A536 65-45-12
9	Wrench Nut	Ductile Iron	A536 65-45-12
10	Post Plate	Ductile Iron	A536 65-45-12



### Dimension:

DN	INCH	L (mm)	L (inch)	H (mm)	H (inch)	D (mm)	D (inch)
50*	2	178	7.00	279	10.98	305	12.01
65**	2 1/2	191	7.50	279	10.98	305	12.01
80**	3	203	8.00	305	12.01	305	12.01
100**	4	229	9.00	324	12.76	305	12.01
125**	5	254	10.00	394	15.51	305	12.01
150**	6	267	10.50	428	16.85	305	12.01
200**	8	292	11.50	537	21.14	305	12.01
250**	10	330	13.00	640	25.20	305	12.01
300**	12	356	14.00	723	28.46	305	12.01

\* FM Approved

\*\* UL Listed & FM Approved

Rev.00-11-2025

T: 011 265 00 70  
www.sffeco.com

In keeping with our policy of continuous product improvement, SFFECO reserves the right to change specifications without prior notice.

شركة المصنع السعودي لأجهزة الإطفاء  
SAUDI FACTORY FOR FIRE EQUIPMENT Co.

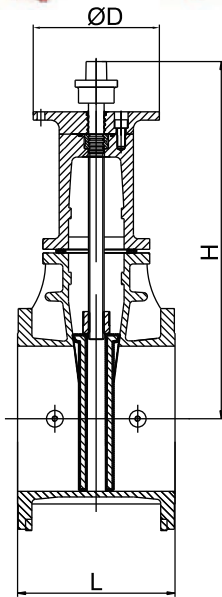
# NRS Gate Valves

200 / 250 psi



Flanged Ends

SF-GV-N-322-FF



## Technical Specification:

- ❖ Valve Standard AWWA C515
- ❖ Fusion bonded coating comply with AWWA C550
- ❖ Working Pressure 200PSI / 250PSI
- ❖ Working Temperature -10°C~120°C
- ❖ Connection Ends B16.42, CLASS150

## Material Specification:

No.	Part	Material	Specification
1	Body	Ductile Iron	A536 65-45-12
2	Wedge Disc	Ductile Iron	EPDM Coated
3	Disc Nut	Bronze	ASTM B62
4	Stem	Stainless Steel	AISI 304/420
5	Gasket	EPDM	Commercial
6	Bonnet	Ductile Iron	A536 65-45-12
7	Thrust Collar	Bronze	ASTM C51100
8	Gland	Ductile Iron	A536 65-45-12
9	Wrench Nut	Ductile Iron	A536 65-45-12
10	Post Plate	Ductile Iron	A536 65-45-12

## Dimension:

DN	INCH	L (mm)	L (inch)	H (mm)	H (inch)	D (mm)	D (inch)	W.P	UL Listed	FM Approved
350	14	381	15	862	33.94	305	12.01	200 psi		✓
								250 psi	✓	✓
400	16	406	15.98	938	36.93	305	12.01	200 psi		✓
								250 psi	✓	✓
450	18	432	17.01	1057	41.61	305	12.01	200 psi		✓
								250 psi	✓	✓
500	20	457	17.99	1142	44.96	305	12.01	200 psi	✓	✓
								250 psi		✓
600	24	508	20	1295	50.98	305	12.01	200 psi	✓	✓
								250 psi		✓

# NRS Gate Valves

## 200 / 250 / 300 psi

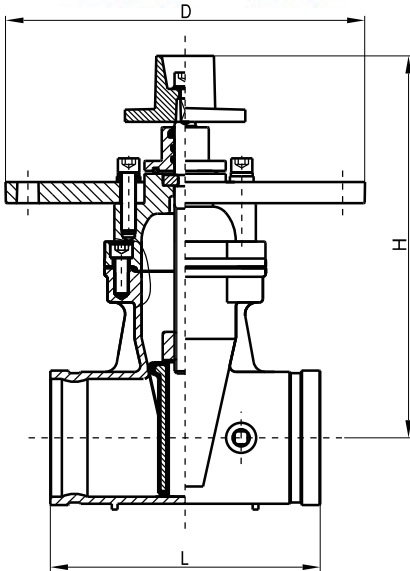


Resilient Seated - Grooved Ends

SF-GV-N-322-GG-200

SF-GV-N-322-GG-250

SF-GV-N-322-GG-300



### Technical Specification:

- ❖ Valve Standard AWWA C515
- ❖ Fusion bonded coating comply with AWWA C550
- ❖ Working Pressure 200PSI / 250PSI / 300PSI
- ❖ Working Temperature -10°C~120°C
- ❖ Connection Ends AWAA C606

### Material Specification:

No.	Part	Material	Specification
1	Body	Ductile Iron	A536 65-45-12
2	Wedge Disc	Ductile Iron	EPDM Coated
3	Disc Nut	Bronze	ASTM B62
4	Stem	Stainless Steel	AISI 304/420
5	Gasket	EPDM	Commercial
6	Bonnet	Ductile Iron	A536 65-45-12
7	Thrust Collar	Bronze	ASTM C51100
8	Gland	Ductile Iron	A536 65-45-12
9	Wrench Nut	Ductile Iron	A536 65-45-12
10	Post Plate	Ductile Iron	A536 65-45-12

### Dimension:

DN	INCH	L (mm)	L (inch)	H (mm)	H (inch)	D (mm)	D (inch)
50*	2	178	7.00	279	10.98	305	12.01
65**	2 1/2	191	7.50	279	10.98	305	12.01
80**	3	203	8.00	305	12.01	305	12.01
100**	4	229	9.00	324	12.76	305	12.01
125**	5	254	10.00	394	15.51	305	12.01
150**	6	267	10.50	428	16.85	305	12.01
200**	8	292	11.50	537	21.14	305	12.01
250**	10	330	13.00	640	25.20	305	12.01
300**	12	356	14.00	723	28.46	305	12.01

\* FM Approved

\*\* UL Listed & FM Approved

Rev.00-11-2025

T: 011 265 0070  
www.sffeco.com

In keeping with our policy of continuous product improvement, SFFECO reserves the right to change specifications without prior notice.

شركة المصنع السعودي لأجهزة الإطفاء  
SAUDI FACTORY FOR FIRE EQUIPMENT Co.



Since 1983, SFFECO has been a trusted name in fire protection, known for innovation and quality worldwide.

With state-of-the-art facilities in Riyadh and Dubai, we deliver a complete range of firefighting solutions that meet international standards.

Our innovative approach and comprehensive product portfolio make SFFECO the one-stop destination for reliable fire protection products and services.

## شركة المصنع السعودي لأجهزة الإطفاء SAUDI FACTORY FOR FIRE EQUIPMENT Co.

### FACTORY & HEAD OFFICE - RIYADH

2nd Industrial Area, Al-Kharj Road, Riyadh, KSA, P.O. Box: 58469, Riyadh 11515  
Tel : +966 11 2650070, E-mail: riyadh@sffeco.com.sa

### JEDDAH BRANCH

P.O. Box: 16769, Jeddah - 21474, KSA  
Tel : +966 12 670 6009,  
E-mail: jeddah@sffeco.com.sa

### DAMMAM BRANCH

P.O. Box: 7162, Dammam - 31462, KSA  
Tel : +966 13 8351961,  
E-mail: dammam@sffeco.com.sa

### MADINAH BRANCH

Tel : 0148660959, 0148283256,  
E-mail: madinah@sffeco.com.sa

