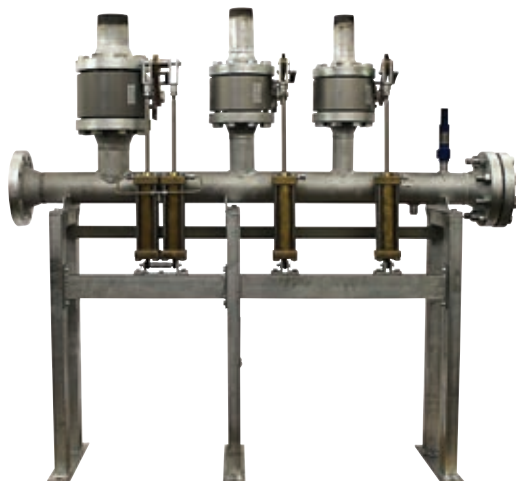


Manifold Selector Valve DN65/80/100

Complete Pneumatic (Optional)



Approvals / CE marking



- 1) Approvals and CE for selector valve only
- 2) Listed system covered by UL-File EX15997 (SFFECO Prime FK SFFECO Prime 227)
- 3) Part of the system approval (SFFECO Prime FK, SFFECO Prim

Maintenance

see operating instruction selector valve BV, part no. 8862

Spare parts

Manual release lever, 600 mm (23.62") long part no. 823

Ordering hints

Manifolds selector valve DN65/80/100 pneumatic are manufactured individually for each contract. Use form C10.40.80 (see documentation special extinguishing systems) for ordering.

Primer coated or powder coated manifolds are to be ordered via order number 40 0015.

Galvanized manifolds are to be ordered via order number 40 0016.

Technical data

Operating mediumCO₂, argon (IG-01), nitrogen (IG-100)
.....IG-55, IG-541, FK-5-1-12, HFC-227ea

Working pressure / test pressure:

- Manifold, selector valves 140 bar / 210 bar
..... (2030 psi / 3045 psi)
- Pneumatic release device 20 to 140 bar / 210 bar
..... (290 to 2030 psi / 3045 psi)

Flow characteristics (high pressure selector valve):

- DN65equivalent length 0.43 m (16.93")
- DN80equivalent length 0.55 m (21.65")
- DN100equivalent length 0.67 m (26.38")

Temperature range-20 °C to +50 °C (-4 °F to 122 °F)

Actuationby 24 V DC

Application

The manifold selector valve BV DN65/80/100 pneumatic is used in accordance with "documentation of special extinguishing systems" in:

- fixed CO₂- high pressure fire extinguishing systems
- argon-, nitrogen, IG-55-, IG-541 extinguishing systems with Constant Flow (CF)
- FK-5-1-12 and HFC-227ea fire extinguishing systems, maximum number of selector valves: 15.

In case of fire the selector valve DN65/80/100 is used for flooding selected extinguishing zones.

Functional description

After a fire has been detected in one of the extinguishing zones of a multi- zone system, the appropriate selector valve opens and the extinguishing agent flows into the relevant downstream pipe work of the extinguishing zone. For recommissioning the selector valve has to be closed manually by using the reset lever. The right position of selector valve may monitored by one or two limit switches.

Main components

Ball valves DN65 - 100
Release cylinder section valve PS 211-33
Safety valve G1/2, depending from operating medium:
- CO₂ (140 bar) PS 214-341
- Inert gas / SFFECO Prime FK,
SFFECO Prime 227 (66 bar) PS 231-341
Limit switch type US 432y and US 434y PS 211-430
..... PS 211-430
Manifold rack - left 81
Manifold rack - right 82

Included in delivery

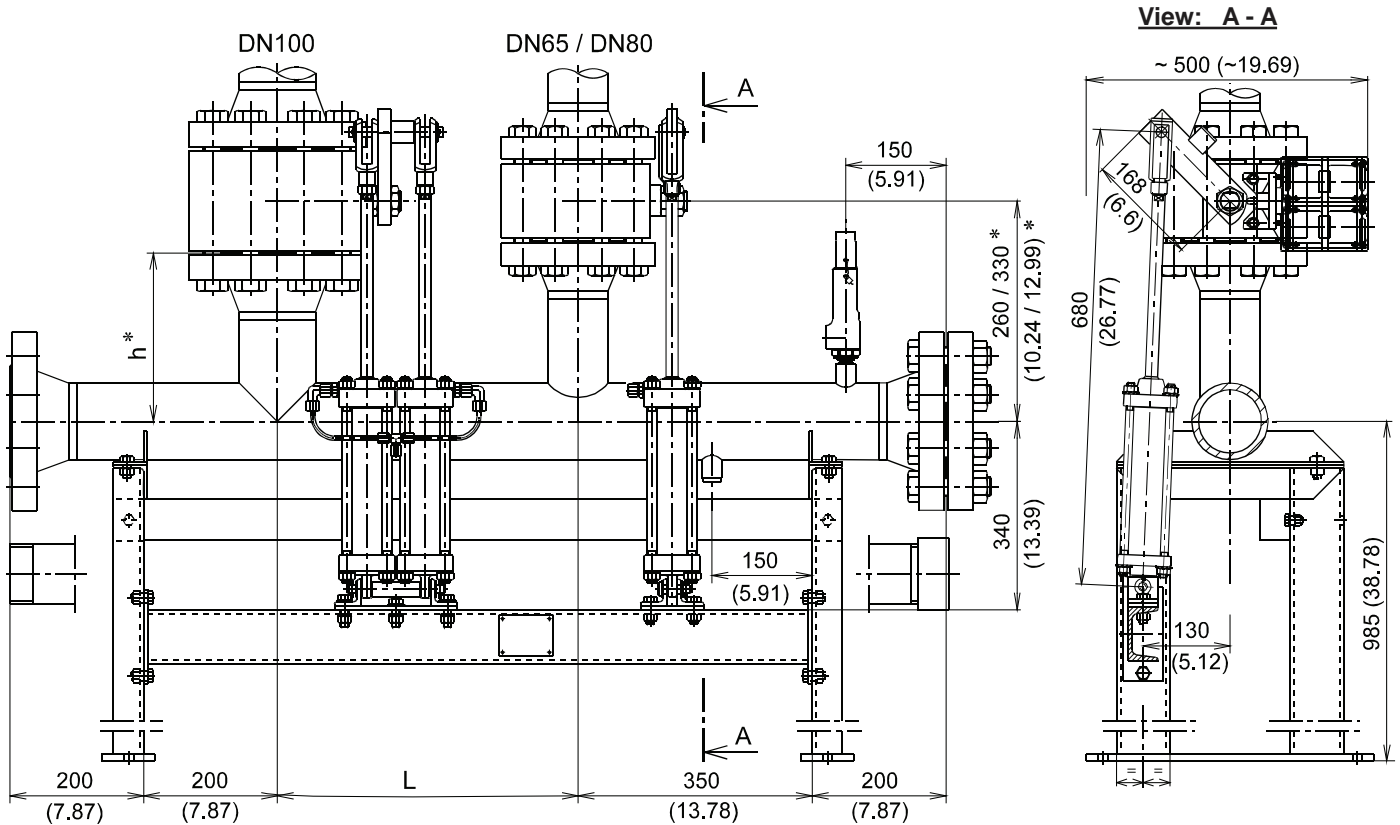
Manifold selector valve complete, pneumatic
Operating instruction selector valve BV part no. 886269

Manifold Selector Valve DN65/80/100

Complete Pneumatic (Optional)

Dimension drawing

Dimensions in mm (inch)



DN	L	h *
65	350 (13.78)	203 / 270 (7.99 / 10.63)
80	350 (13.78)	200 / 267 (7.87 / 10.51)
100	450 (17.72)	250 (9.84)

* The longer dimensions are valid for manifolds with min. one selector valve DN100.

Selector Valve MX-BV DN25 – 50 PB235 (Optional)



Approvals / CE marking



1) Listed system covered by UL-file EX15997 (SFFECO Prime FK, SFFECO Prime 227)

2) Part of the system approval (SFFECO Prime FK, SFFECO Prime 227)

SAP designation

e.g. part no. 885189: Selector valve BV 25 PB235

Maintenance

see operating instruction selector valve BV DN25/40/50
part no. 886333

Designation		Part no.	Weight kg (lbs)
Selector valve BV	DN25	885189	17.0 (37.5)
	DN40	885191	20.5 (45.2)
	DN50	885192	24.8 (54.7)
	DN25 - NPT	912052	17.0 (37.5)
	DN40 - NPT	912053	20.5 (45.2)
	DN50 -NPT	912054	24.8 (54.7)

Technical data

TypeMX-BV
 Operating mediumCO₂, argon (IG-01), nitrogen (IG-100),
IG-55, IG-541, HFC-227ea, FK-5-1-12
 Temperature range-20 °C to +50 °C (-4 °F to +122 °F)
 Working pressure:
 - manifold, selector valves235 bar (3408 psi)
 - pneumatic release device20 to 140 bar (290 to 2030 psi)
 Test pressure:
 - manifold, selector valves353 bar (5120 psi)
 - pneumatic release device210 bar (3045 psi)
 Flow characteristics (selector valve):
 - DN25equivalent length 0.18 m (0.59 ft)
 - DN40equivalent length 0.27 m (0.89 ft)
 - DN50equivalent length 0.37 m (1.21 ft)
 Test certificatein acc. with EN 10204 - 3.1 (pressure test)
 Selector valvecomplies with EN 12094-5
 CE conformityacc. to Construction Products Regulation (EU)
No 305/2011

Product sheets also applying

Cylinder D55-H106PS 211-334_001
 Ball valves BV DN25, DN40 and DN50PS 211-334_002

Marking

Type (MX-BV ..), VdS no. (G393001), MX test no.
 additional marking for selector valve with NPT thread:
 thread (NPT)

Application

The selector valve BV DN 25/40/50 is used in accordance with the “documentation of special extinguishing systems” in fixed CO₂, argon, nitrogen, IG-55 and IG-541 high pressure fire extinguishing systems or FK-5-1-12 and HFC-227ea fire systems respectively.
 In case of fire the selector valve DN 25/40/50 is used for flooding selected extinguishing zones.

Functional description

After a fire has been detected in one of the extinguishing zones of a multi- zone system, the appropriate selector valve opens. The extinguishing agent, CO₂, argon, nitrogen, IG-55, IG-541 or FK-5-1-12 and HFC-227ea, flows into the relevant downstream pipe work of the extinguishing zone.

A safety valve is mounted on the manifold in order to release any excessive pressure.

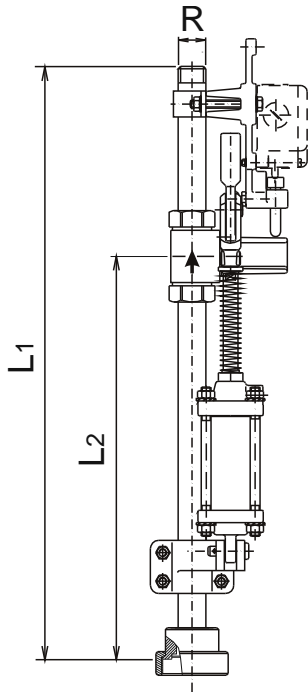
For recommissioning, the selector valve has to be closed manually by using the reset hand lever. The right position of selector valve may monitored by one or two limit switches.

Not included in delivery

Limit switch US 432y, 2 contacts724420, PS 211-430_005
 Manual release lever BV <DN65, 497 mm long860346

Selector Valve MX-BV DN25 – 50 PB235 (Optional)

Dimension drawing
Dimensions in mm (inch)



DN	R	L ₁ ±15 (0.6)	L ₂ ±15 (0.6)
25	R1 - DIN 2999	810 (31.9)	579 (22.8)
40	R1.1/2 - DIN 2999	795 (31.3)	575 (22.6)
50	R2 - DIN 2999	805 (31.7)	584 (23.0)
25 - NPT	1 - 11.5 NPT	810 (31.9)	579 (22.8)
40 - NPT	1.1/2 - 11.5 NPT	795 (31.3)	575 (22.6)
50 - NPT	2 - 11.5 NPT	805 (31.7)	584 (23.0)

Push Button Selector Valve (Optional)

Approvals



1) Listed system covered by UL-File EX15997 (SFFECO Prime FK, SFFECO Prime 227)

2) Part of the system approval (SFFECO Prime FK, SFFECO Prime 227)



SAP designation

part no. 822674: Push-button selector valve

Maintenance

technical description push-button selector valve
part no. 886501

Designation	Part no.	Weight
Push-button selector valve	822674	0.16 kg (0.35 lbs)

Technical data

Operating mediumCO₂ - gaseous, argon (IG-01),
.....nitrogen (IG-100), IG-55, IG-541, HFC-227ea, FK-5-1-12
Working pressure2 to 365 bar (29 to 5294 psi)
Temperature range-20 °C to +50 °C (-4 °F to 122 °F)
Thread connectionfor precision-drawn steel pipe 10 x 1
Position of deviceas desired

Material / Surface

Knurled screwbrass, nickel plated
Non-return valvesteel, galvanized

Application

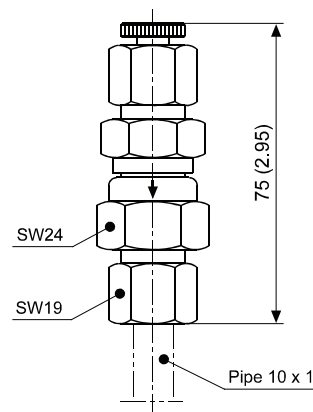
The push-button is used in accordance with the project-specific system schema in fixed fire extinguishing systems.
The push-button is used to manually vent pilot lines. This ensures that the pilot lines can be pressure-relieved without having to dismount them.

Included in delivery

Push-button selector valve
Technical description push-button selector valve part no. 886501

Dimension drawing

Dimensions in mm (inch)



Pilot Control Manifold CO₂ – DN15

Approvals



¹⁾ Listed system covered by UL-File EX15997 (SFFECO Prime FK, SFFECO Prime 227)

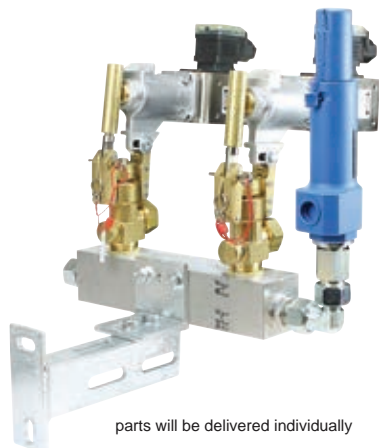
²⁾ Part of the system approval (SFFECO Prime FK, SFFECO Prime 227)

SAP designation

e.g. part no. 830778: Pilot control manifold CO₂ - DN15 - 2

Maintenance

see technical description pilot control manifold DN15
part no. 876772



parts will be delivered individually

Branches	Part no.	Weight approx. kg (lbs)
2	830778	9.7 (21.4)
3	830791	14.2 (31.3)
4	830808	17.7 (39.0)
5	830833	22.2 (48.9)
6	830857	26.8 (59.1)
7	830870	30.2 (66.6)
8	830894	34.7 (76.5)

Branches	Part no.	Weight approx. kg (lbs)
9	830912	39.3 (86.6)
10	830936	42.7 (94.1)
11	830950	47.3 (104.3)
12	830973	51.8 (114.2)
13	830985	55.2 (121.7)
14	830997	59.8 (131.8)
15	834115	64.3 (141.8)

Technical data

Operating mediumcarbon dioxide (CO₂)
Working pressure140 bar (2030 psi)
Test pressure210 bar (3045 psi)
Temperature range-20 °C to +50 °C (-4 °F to +122 °F)
Connected voltage24 V DC

Product sheets also applying

Safety valve G1/2 - 140 bar886282, PS 214-341_001
Argon cylinder valve K85-20.0-S49871014, PS 211-131_001
Lever - cylinder valve885603, PS 211-420_006
Release device EM 24 V DC885738, PS 211-420_003

Application

The pilot control manifold DN 15 may only be used in accordance with system approval in stationary CO₂, argon, nitrogen, IG-55, IG-541, FK-5-1-12 and HFC-227ea fire extinguishing systems. It is used as a pilot control valve in the pneumatic activation of fire extinguishing systems or as a CO₂ extinguishing agent manifold for small design quantity, for example local protection for electrical devices.

Functional description

The release device EM is triggered by an electrical activation. The release bolt of the release device is released and actuates the valve lever, which turns around by approx. 90° and opens the valve.
The safety valve prevents an undue exceeding of the operating pressure.

Included in delivery

Pilot control manifold CO₂ - DN15 (not pre-assembled)
Techn. description pilot control manifold DN15 part no. 876772
Installation drawing pilot control manifold DN15 part no. 827301

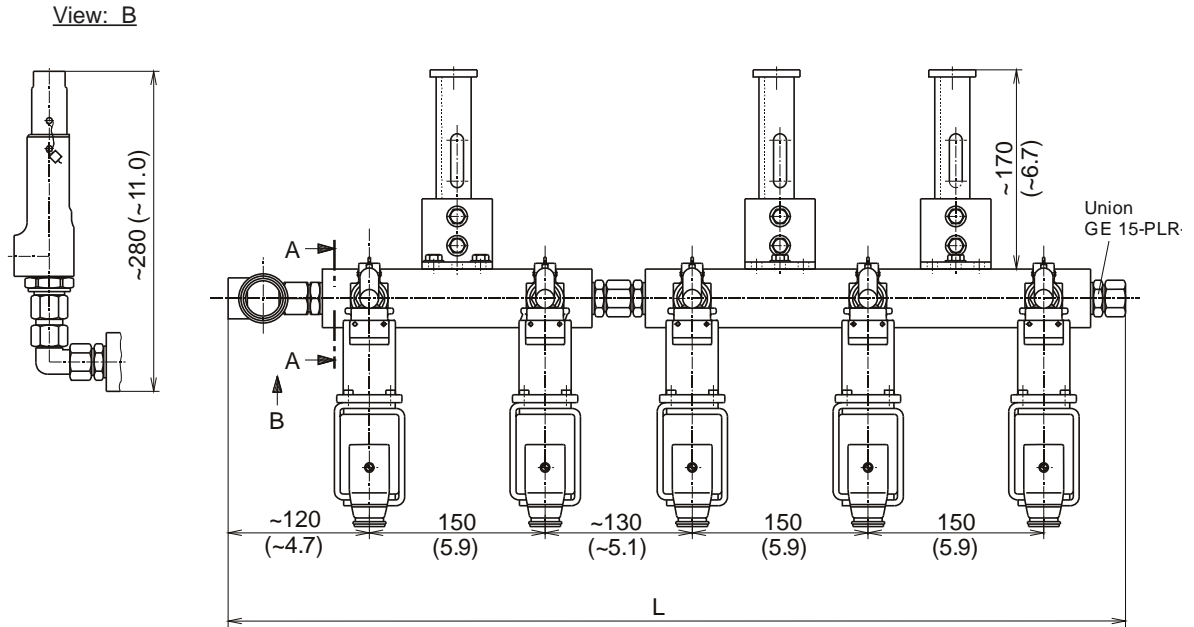
Not included in delivery

Connection to valve:
Adapter for connecting CO₂ - Ermeto DN4827325
DN8855425
Monitoring for release device EM885740, PS 211-430_008

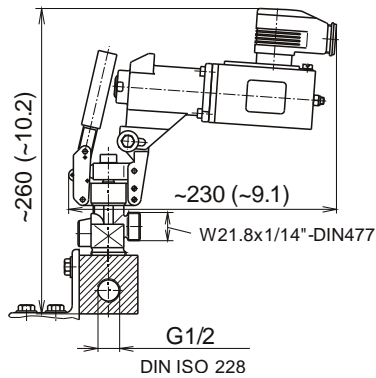
Pilot Control Manifold CO2 - DN 15 (Optional)

Dimension drawing

Dimensions in mm (inch)



Section: A-A



Branches	L
2	340 (13.4)
3	490 (19.3)
4	620 (24.4)
5	770 (30.3)
6	920 (36.2)
7	1050 (41.3)
8	1200 (47.2)
9	1350 (53.2)
10	1480 (58.3)
11	1630 (64.2)
12	1780 (70.1)
13	1910 (75.2)
14	2060 (81.1)
15	2210 (87.0)

Shuttle Non-Return Valve WRV

DN4 and DN8 (Optional)



Approvals / CE marking



¹⁾ Listed system covered by UL-File UL-file EX15997 (SFFECO Prime FK SFFECO Prime 227)

²⁾ Part of the system approval:

- Oxeo PR LCP, IG-01, IG-100
- Carbon Dioxide Extinguishing System CO₂ Low Pressure
- SFFECO Prime FK, SFFECO Prime 227

SAP designation

e.g. part no. 886247: Shuttle non-return valve WRV 4

Maintenance

see technical description shuttle non-return valve part no. 886246

DN	Part no.	For pipe	Weight
4	886247	6 x 1	0.25 kg (0.55 lbs)
8	886248	10 x 1	0.24 kg (0.53 lbs)

Technical data

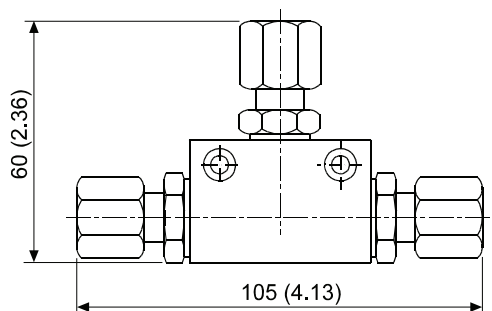
Operating mediumCO₂ - gaseous, argon (IG-01),
.....nitrogen (IG-100), IG-55, IG-541, HFC-227ea, FK-5-1-12
Working pressure2 to 140 bar (29 to 2030 psi)
Test pressure210 bar (3045 psi)
Rate of pressure risemin. 3 bar/s (43,5 psi/s)
Installation positionfeedings only horizontal
Shuttle non-return valvescomplies with EN 12094-13
CE conformityacc. to Construction Products Regulation (EU)
.....No. 305/2011

Material / Surface

Housingaluminium
GasketNBR
Ballstainless steel

Dimension drawing

Dimensions in mm (inch)



Application

The shuttle non-return valve is used in in stationary CO₂, IG-01, IG-100, IG-55, IG-541, FK-5-1-12 and HFC-227ea extinguishing systems according to the system approval.

Functional description

The shuttle non-return valve for the pneumatic control allows the differential direct control of pneumatic units with two pressure sources.

Included in delivery

Shuttle non-return valves WRV
Technical description shuttle non-return valve part no. 886246