

## Release Device Electrical

### Approvals / CE marking



- 1) Only in conjunction with valve B0481 / B0482 (G307011) or with valve B0480 (G302023)
- 2) Listed system covered by UL-file EX15997 (SFFECO Prime FK, SFFECO Prime 227)
- 3) Part of the system approval



### SAP designation

e.g. part no. 887667: Release device electrical

### Maintenance

see technical description release device el. part no. 887863  
for use in accordance with UL system approval:  
see technical description electrical release  
part no. 889299

Designation		Part no.	Weight
Release device electrical	with diode <sup>4)</sup>	887667	2.49 kg (5.5 lbs)
	without diode	889323	

### Technical data

Type / part no. manufacturer with diode .....B04425114  
without diode .....B04425130

Nominal voltage .....24 V / DC  $\pm 15$  %

Nominal current .....0.5 A  $\pm 10$  %

IP code .....IP65

Electrical connection .....PG9

Max. permitted test current .....20 mA

Operating temperature range:

- VdS .....-20 °C to +50 °C (-4 °F to 122 °F)
- UL / ULC .....-18 °C to +27,5 °C (0 °F to 81,5 °F)
- FM .....-18 °C to +50 °C (0 °F to 122 °F)
- GL .....-20 °C to +56 °C (-4 °F to 132 °F)

Duration of connection .....100 % duty ratio

Actuation force at the contact with the plunger ..... $\geq 500$  N

Holding force in resting state .....100 N to 250 N

### Marking

part no. manufacturer, manufacturing no., manufacturing date,  
nominal voltage, nominal current, torque

<sup>4)</sup> The electrical connection of the release device is fitted with a diode which allows for the electric circuit and the polarity to be tested afterwards using a test current.

### Application

Electrical actuation of extinguishing agent cylinder valves of type B0481 / B0482 (see cylinder valve, Halocarbon), type B0482 (see cylinder valve, inert gas extinguishing technology). One extinguishing agent cylinder valve each can be opened electrically by applying of the nominal voltage.

### Note

The electrical actuation signal must be present for at least 5 seconds.

### Included in delivery

Release device electrical  
Technical description release device el. part no. 887863

### Not included in delivery

Screw reset tool .....887645

Module for monitoring MVA LÖ (optional):

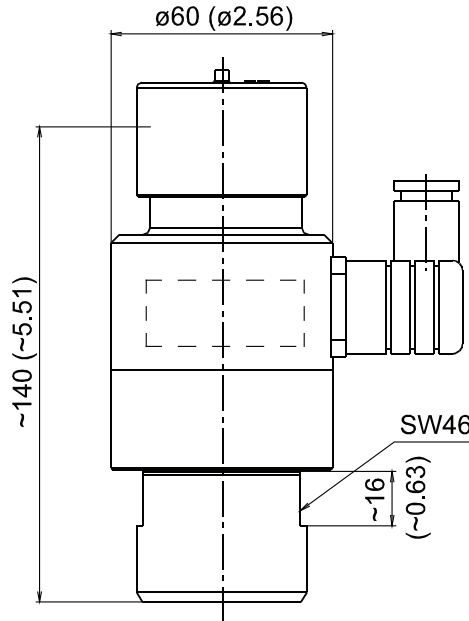
- Card MVA LÖ .....782239
- Technical description card MVA LÖ .....904653
- Connector plug GDME 3013 with gasket .....761094

Additionally further release devices can be installed:

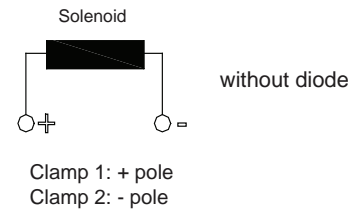
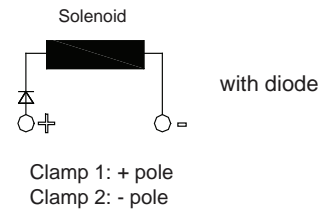
- Pneumatic .....see ad-on part cylinder
- Pneumatic/Manual .....see ad-on part cylinder
- Manual .....see ad-on part cylinder
- Tackle pneumatic/manual - marine .....see ad-on part cylinder

## Release Device Electrical

### Dimension drawing Dimensions in mm (inch)

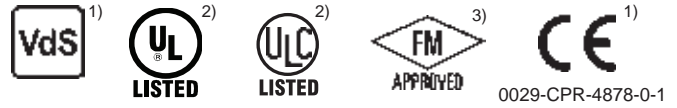


### Terminal connection



## Release Device Electrical

### Approvals / CE marking



1) Only in conjunction with valve B0481 / B0482 (G307011) or with valve B0480 (G302023)

2) Listed system:  
- MX 1230 and MX 200 (UL-File EX5248)

3) Part of the system approval:  
- MX 1230 (FM23FPUS0043) and MX 200 (FM23FPUS0042)

### SAP designation

e.g. part no. 4004595: Release device electrical with diode

### Maintenance

see technical description release device el. part no. 887863

for use in accordance with UL system approval:  
see technical description electrical release  
MX 1230/200 part no. 889299

Designation		Part no.	Weight
Release device electrical	with diode <sup>4)</sup>	4004595	1.84 kg (4.1 lbs)
	without diode	4004508	

### Technical data

Type / part no. manufacturer with diode .....B04425148  
without diode .....B04425149

Nominal voltage .....24 V / DC  $\pm 15\%$

Nominal current .....0.5 A  $\pm 10\%$

Duration of connection .....100 % duty ratio

Electrical connection .....PG9

Max. permitted test current .....20 mA

Operating temperature .....-17 °C to +55 °C (1.4 °F to 131 °F)

Relative humidity .....20 % to 80 %

IP code .....IP65

Mounting tightening torque .....35 - 50 Nm (25,8 - 36,8 lbf ft)

### Marking

part no. manufacturer, manufacturer's sign, manufacturing date (week/year), batch number (WA) last 4 digits, approval mark, nominal voltage, nominal current, torque

<sup>4)</sup> The electrical connection of the release device is fitted with a diode which allows for the electric circuit and the polarity to be tested afterwards using a test current.

### Application

Electrical actuation of extinguishing agent cylinder valves of type B0481 / B0482 (see cylinder valve, Halocarbon), type B0482 (see cylinder valve, inert gas extinguishing technology). One extinguishing agent cylinder valve each can be opened electrically by applying of the nominal voltage.

### Note

The electrical actuation signal must be present for at least 5 seconds.

### Included in delivery

Release device electrical  
Technical description release device el. part no. 887863

### Not included in delivery

Screw reset tool MX 1230/200 .....887645

Module for monitoring MVA LÖ (optional):

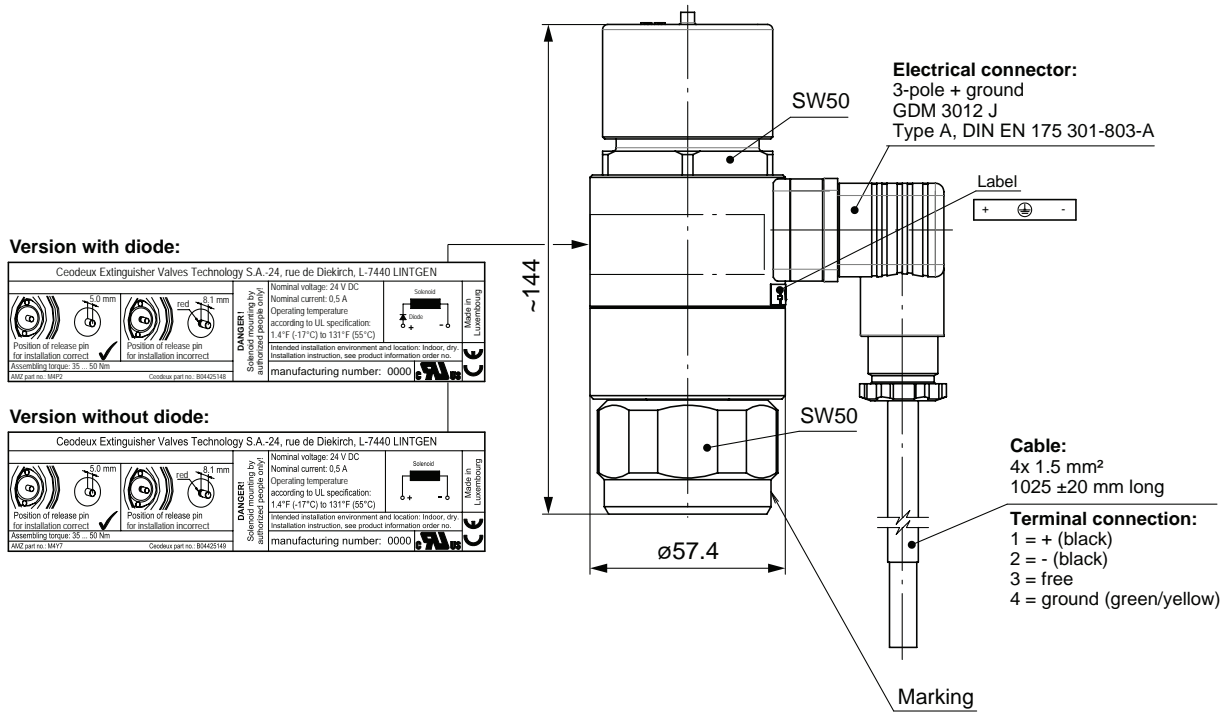
- Card MVA LÖ .....782239
- Technical description card MVA LÖ .....904653
- Connector plug GDME 3013 with gasket .....761094

Additionally further release devices can be installed:

- Pneumatic/Manual .....PS 231-210\_004
- Manual .....PS 231-210\_005
- Tackle pneumatic/manual - marine .....PS 231-210\_006

## Release Device Electrical

### Dimension drawing Dimensions in mm (inch)



## Release Device Manual

### Approvals



1) Listed system covered by UL-file EX15997 (SFFECO Prime FK, SFFECO Prime 227)

2) Part of the system approval



### SAP designation

part no. 887668: Release device manual

### Maintenance

see technical description release device ma part no. 887989

Designation	Part no.	Weight
Release device manual	887668	0.41 kg (0.90 lbs)

### Technical data

Type / part no. manufacturer .....B04420100  
 Operating temperature range:  
 - EN/ISO .....-20 °C to +50 °C (-4 °F to 122 °F)  
 - UL/ULC/FM .....-18 °C to +50 °C (0 °F to 122 °F)  
 - GL .....-20 °C to +56 °C (-4 °F to 132 °F)

### Note

The manual actuation must take place at least 5 seconds.

### Included in delivery

Release device manual  
 Technical description release device ma part no. 887989

### Application

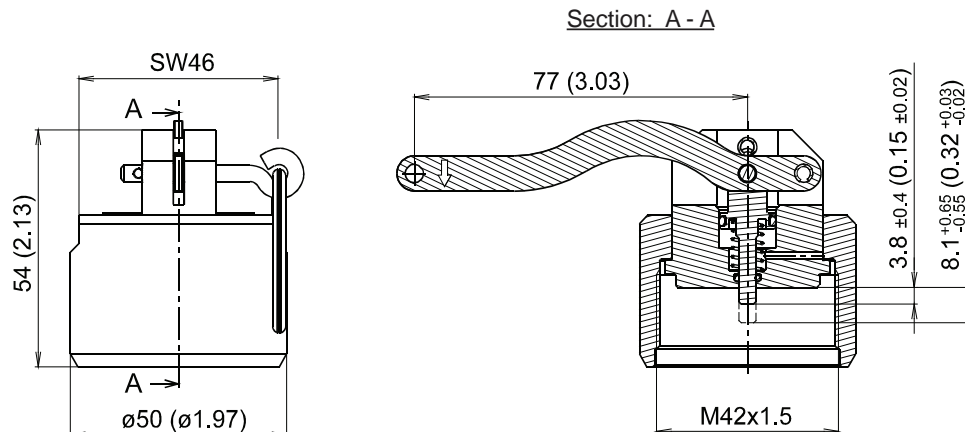
Manual actuation of extinguishing agent cylinder valves of type B0481 / B0482 (see cylinder valve, Halocarbon), type B0482 (see cylinder valve, inert gas extinguishing technology). One extinguishing agent cylinder valve each can be opened manual.

### Not included in delivery

Additional possible use also with release device:  
 - Electrical .....see ad-on part cylinder  
 - Electrical with mech. blocking device .....see ad-on part cylinder

### Dimension drawing

Dimensions in mm (inch)



## Release Device Pneumatic

### Approvals / CE marking



- 1) Only in conjunction with valve B0481 / B0482 (G307011) or with valve B0480 (G302023)
- 2) Listed system covered by UL-file EX15997 (SFFECO Prime FK, SFFECO Prime 227)
- 3) Part of the system approval



### SAP designation

part no. 887669: Release device pneumatic

### Maintenance

see technical description release device pn part no. 887862

Designation	Part no.	Weight
Release device	887669	0.48 kg (1.1 lbs)

### Technical data

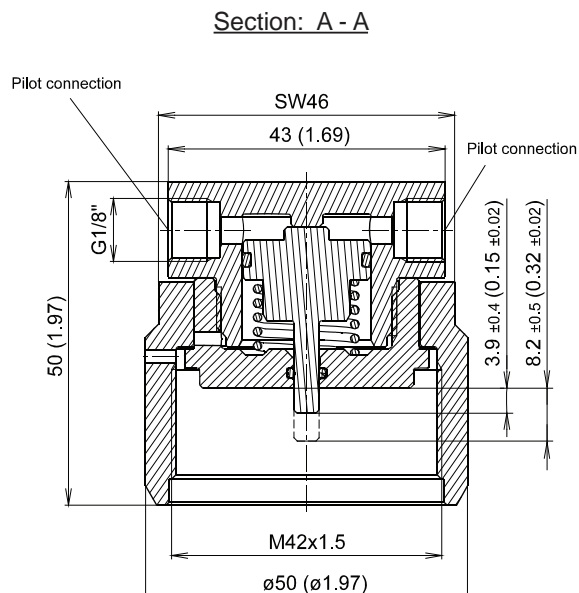
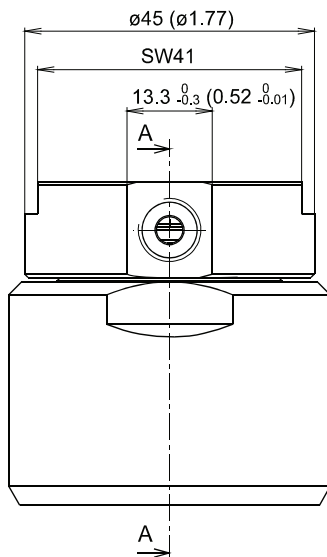
Type / part no. manufacturer .....B04420066  
 Response pressure min. ....21 bar (305 psi)  
 max. ....360 bar (5221 psi)  
 Operating temperature range:  
 - VdS .....-20 °C to +50 °C (-4 °F to 122 °F)  
 - UL / ULC / FM .....-18 °C to +50 °C (0 °F to 122 °F)  
 - GL .....-20 °C to +56 °C (-4 °F to 132 °F)

### Note

The actuating pressure must be applied for at least 5 seconds.  
 The release device is equipped with two connections for pilot pipes to allow the control gas to be passed on to additional release devices.

### Dimension drawing

Dimensions in mm (inch)



### Application

Pneumatic actuation of extinguishing agent cylinder valves of type B0481 / B0482 (see cylinder valve, Halocarbon), type B0482 (see cylinder valve, inert gas extinguishing technology). One extinguishing agent cylinder valve each can be opened pneumatically.

### Included in delivery

Release device pneumatic  
 Technical description release device pn part no. 887862

### Not included in delivery

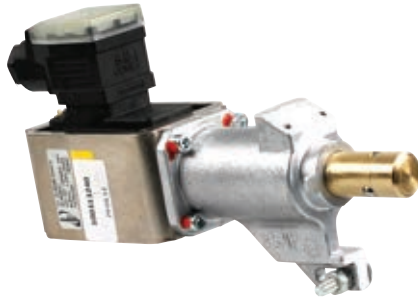
Adapter M12x1.5 - G1/8 .....887644, see ad-on part cylinder  
 Plug for pilot connection G1/8 .....88803  
 Additional possible use also with:  
 Release device electrical .....see ad-on part cylinder

## Release Device EM (Optional)

### Approvals



- 1) Listed system for release device 24 V DC only covered by UL-file EX15997 (SFFECO Prime FK, SFFECO Prime 227)
- 2) Part of the system approval (SFFECO Prime FK, SFFECO Prime 227) release device EM 24 V DC only



### SAP designation

e.g. part no. 885738: Release device EM 24V-DC

### Maintenance

see operating instruction release device EM, part no. 885744

Designation	Part no.	Weight
Release device EM	24 V DC	885738
	230 V AC <sup>3)</sup>	885739
		1.8 kg (4.0 lbs)

<sup>3)</sup> Release device EM 230 V AC without approval

### Technical data

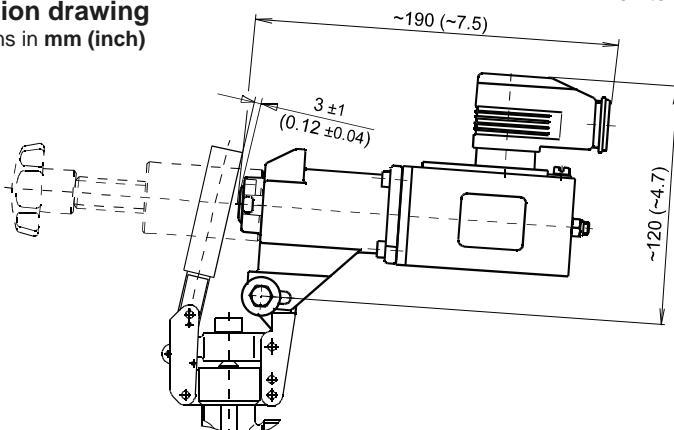
Temperature range  
Solenoid .....-20 °C to +50 °C (-4 °F to 122 °F)  
Magnetic force .....44 N  
Switching duration .....100 %  
Voltage .....24 V DC (18 - 28 V DC) / 230 V AC  
Current .....1.04 A / 0.12 A  
Stroke .....9 mm (0.35")  
IP code .....IP 54  
(by accordingly covering of the pull and pressure rod side)

### Application

The release device EM may be used only in accordance with the "documentation of special extinguishing systems" in fixed CO<sub>2</sub>, argon, nitrogen, IG-55 and IG-541 fire extinguishing systems. It is used for electrical release of lever valve.

### Dimension drawing

Dimensions in mm (inch)



### Functional description

The solenoid of the release device EM is triggered by an electrical signal whereby the spring loaded release bolt is unlocked. The release bolt pushes against the lever of the valve, which turns around by approx. 90°.

### Included in delivery

Release device EM with fastening material  
Operating instruction release device EM part no. 885744

### Additionally for release device EM 24 V DC:

- Card MVA LÖ .....782239
- Technical description card MVA LÖ .....904653

### Not included in delivery

Reset tool for release device EM .....885530, see control device  
Bracket for reset tool release device EM .....886367, see control device  
Monitoring for release device EM ....885740, see monitoring device

## Reset Tool for Release Device EM

### and Bracket for Reset Tool (Optional)

#### Approvals

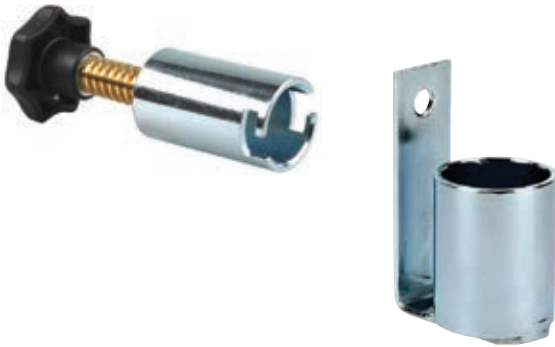
no approval required

#### SAP designation

e.g. part no. 885530: Reset tool release device EI

#### Maintenance

maintenance-free



Designation	Part no.	Weight kg (lbs)
Reset tool for release device EM	885530	0.31 (0.68)
Bracket for reset tool	886367	0.32 (0.71)

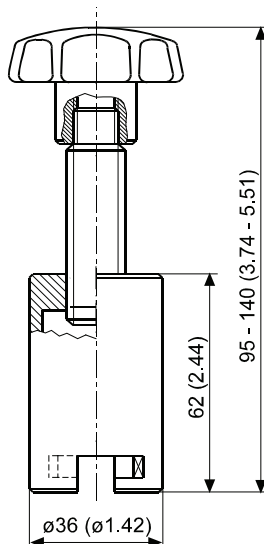
#### Technical data

Bracket for reset tool release device EM .....steel, galvanized

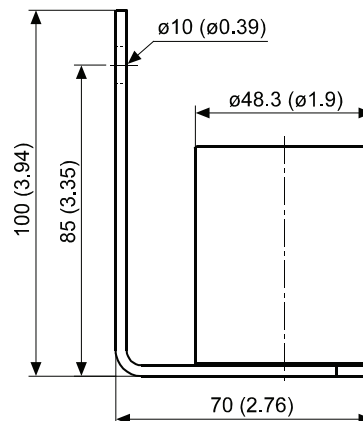
#### Dimension drawing

Dimensions in mm (inch)

#### Reset tool for release device EM



#### Bracket for reset tool release device EM



## Safety Device Malfunction Pressure

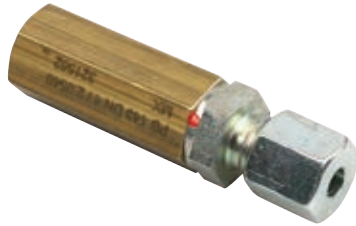
### SFD DN4 (Optional)

#### Approvals



<sup>1)</sup> Listed system covered by UL-File EX15997 (SFFECO Prime FK, SFFECO Prime 227)

<sup>2)</sup> Part of the system approval (SFFECO Prime FK, SFFECO Prime 227)



#### SAP designation

part no. 885869: Safety device malfunction pressure SFD DN4

#### Maintenance

see technical description safety device malfunction pressure SFD DN4 part no. 885867

Designation	Part no.	Weight
Safety device malfunction pressure SFD DN4	885869	0.15 kg (0.33 lbs)

#### Technical data

Operating medium .....argon (IG-01), nitrogen (IG-100),  
.....IG-55, IG-541, carbon dioxide (CO<sub>2</sub>) / gaseous,  
.....HFC-227ea, FK-5-1-12  
Working pressure ..... 140 bar (2030 psi)  
Test pressure ..... 210 bar (3045 psi)  
Temperature range .....-20 °C to +50 °C (-4 °F to +122 °F)  
Connection DN4 .....pipe 6 x 1  
Installation position .....vertical, see page 2

#### Material / Surface

Housing .....brass  
Gasket .....NBR  
Ball .....1.4301

#### Application

The safety device malfunction pressure is used in accordance with the project-specific system schema in fixed fire extinguishing systems. The safety device malfunction pressure is intended only for releasing small amounts of leakage in pneumatic pilot lines. The safety device closes automatically on higher pressure.

#### Note

The safety device malfunction pressure **has to be** installed upright into the pilot lines as well an installation nearby a potential leakage (e.g. pilot gas tank) is recommended.

#### Included in delivery

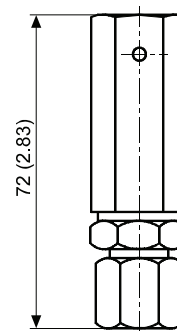
Safety device malfunction pressure SFD DN4  
Technical description safety device malfunction pressure SFD DN4 part no. 885867

#### Not included in delivery

Unions and pipe for extinguishing pipework and pilot pipes  
see page 2/2

#### Dimension drawing

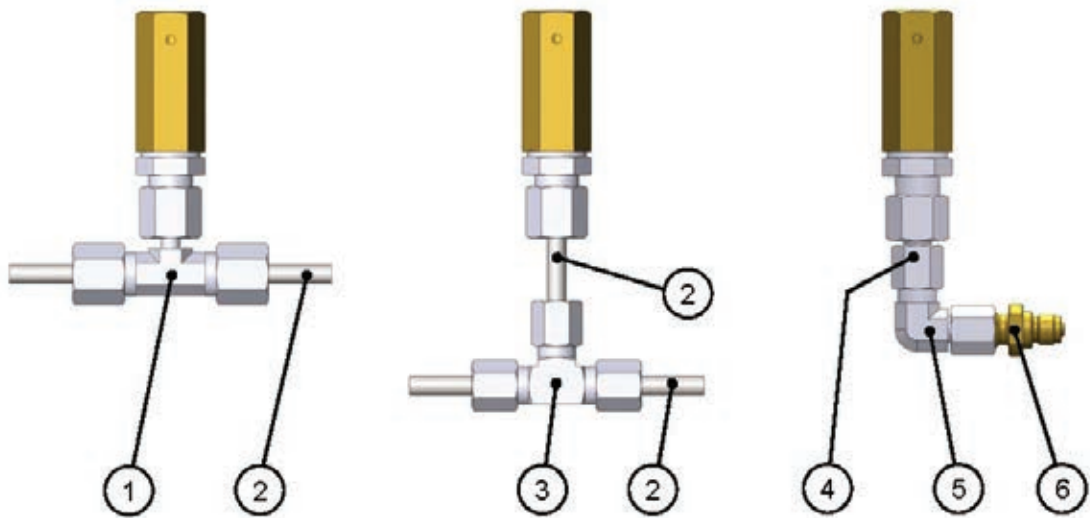
Dimensions in mm (inch)



## Safety Device Malfunction Pressure

### SFD DN4 (Optional)

#### Installations examples



#### **Not included in delivery**

- Item 1: Union EVT 06 SA3C .....part no. 886406
- Item 2: Pipe 6 x 1 mm (0.236 x 0.039 inch) .....part no. 823563
- Item 3: Union T 6-PLA3C .....part no. 125633
- Item 4: Union GZR06L/06SCF .....part no. 910650
- Item 5: Union EW 06 LCF .....part no. 889145
- Item 6: Adapter M12x1.5 – G1/8 .....part no. 887644  
(for release device pneumatic or pneumatic/manual)

## Accessories Connection Pressure Relief

### SFD DN4 (Optional)

#### Approvals



<sup>1)</sup> UL applies to push-button selector valve  
Listed system covered by UL-File EX15997 (SFFECO Prime FK, SFFECO Prime 227)



#### SAP designation

part no. 889320: Accessories connection pressure relief

#### Maintenance

see technical description accessories connection pressure relief (English) part no. 912454

Designation	Part no.	Weight
Accessories connection pressure relief SFD DN4	889320	0.57 kg (1.26 lbs)

#### Technical data

Operating medium .....argon (IG-01), nitrogen (IG-100),  
.....IG-55, IG-541, carbon dioxide (CO<sub>2</sub>) / gaseous,  
.....HFC 227 ea, FK 5-1-12  
Working pressure..... 140 bar (2030 psi)  
Temperature range .....-20 °C to +50 °C (-4 °F to +122 °F)  
Installation position .....vertical, see page 2

#### Material / Surface

Housing .....brass / steel  
Gasket .....NBR  
Ball (safety device malfunction pressure SFD DN4) .....1.4301

#### Application

The pressure relief is used in accordance with the project-specific system schema in fixed fire extinguishing systems.

Intended use of the single components:

- The safety device malfunction pressure is intended only for releasing small amounts of leakage in pneumatic pilot lines. The safety device closes automatically on higher pressure.
- The push-button selector valve is intended only to manually vent of pneumatic pilot lines.

#### Note

The safety device malfunction pressure **has to be** installed upright into the pilot lines as well an installation nearby a potential leakage (e.g. pilot gas tank) is recommended.

#### Included in delivery

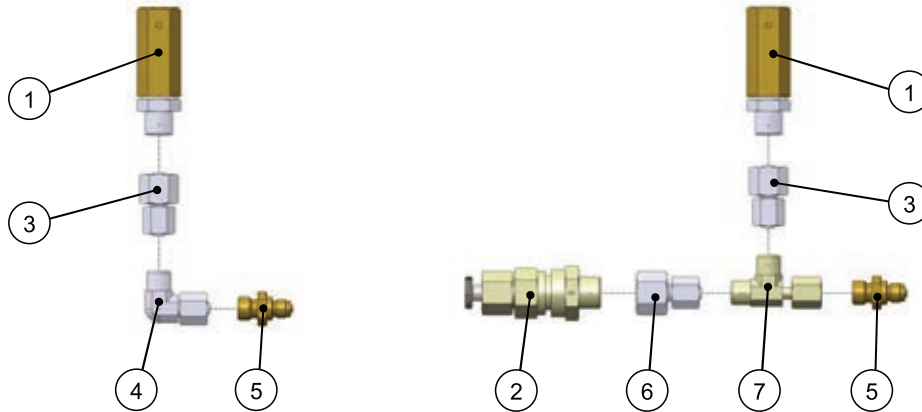
Accessories connection pressure relief SFD DN4 consisting of:

- Safety device malfunc. pressure SFD DN4 ...885869, see control device
- Push-button selector valve .....822674, see control device
- Union EVL 6-PL A3C .....786956
- Adapter M12x1,5 - G1/8 "227" .....887644
- Union GZR06L/06SCF .....910650
- Union GZR10/06LCF .....910651
- Union EW06LCF .....889145
- Technical description accessories connection pressure relief part no. 910653

## Accessories Connection Pressure Relief

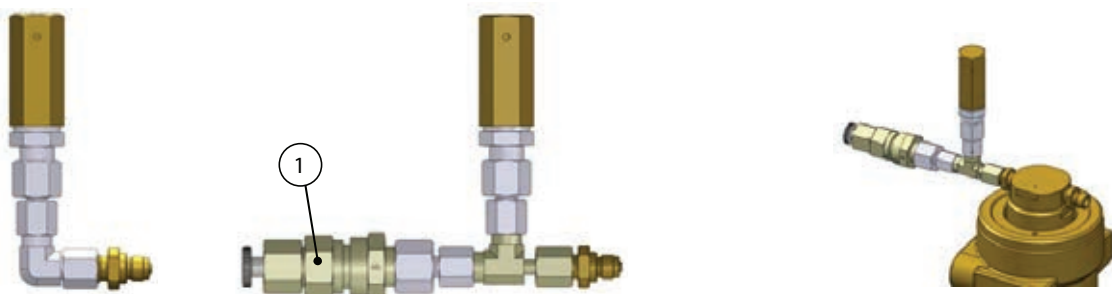
### SFD DN4

#### Accessories connection pressure relief (individual parts)



- Item 1 Safety device malfunction pressure SFD DN4
- Item 2 Push-button selector valve
- Item 3 Union GZR06L/06SCF
- Item 4 Union EW06LCF
- Item 5 Adapter M12x1,5 – G1/8  
(for release device pneumatic or pneumatic/manual)
- Item 6 Union GZR10/06LCF
- Item 7 Union EVL 6-PLA3C

#### Accessories connection pressure relief (assembled)

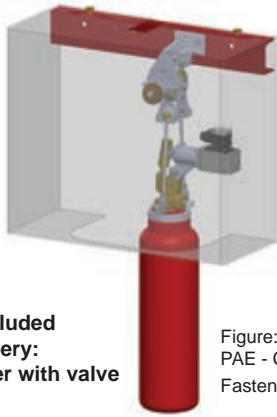


Example of application

The version with the push-button selector valve (item 1) is used to manually vent pilot lines in combination with a pneumatic release device (PAE).

## Pneumatic Release Device PAE CO<sub>2</sub>

### Electrical UL/FM(Optional)



**Not included  
in delivery:  
Cylinder with valve**

Figure:  
PAE - CO<sub>2</sub> electrical with protective cover  
Fastening material not shown

#### Approvals



- 1) Part of the system approval (SFFECO Prime FK, SFFECO Prime 227)
- 2) Listed system covered by UL-File EX15997 (SFFECO Prime FK, SFFECO Prime 227)

#### SAP designation

e.g. part no. 911751: PAE-CO<sub>2</sub>-EM-3,6kg compl. FM/UL

#### Maintenance

see operating instruction PAE-CO<sub>2</sub> part no. 885374

Pneumatic release device FM/UL		Part no.	Amount filled <sup>3)</sup>	Weight <sup>4)</sup> approx.	
PAE - CO <sub>2</sub> electrical	with protective cover	3,6 kg	911751	3.6 kg (7.9 lbs)	28 kg (62 lbs)
		7,1 kg	911759	7.1 kg (15.7 lbs)	38 kg (84 lbs)
	without protective cover	3,6 kg	911750	3.6 kg (7.9 lbs)	24 kg (53 lbs)
		7,1 kg	911758	7.1 kg (15.7 lbs)	34 kg (75 lbs)
PAE - CO <sub>2</sub> electrical with reserve	with protective cover	3,6 kg	911753	2x 3.6 kg (2x 7.9 lbs)	48 kg (106 lbs)
		7,1 kg	911761	2x 7.1 kg (2x 15.7 lbs)	66 kg (146 lbs)
	without protective cover	3,6 kg	911752	2x 3.6 kg (2x 7.9 lbs)	44 kg (97 lbs)
		7,1 kg	911760	2x 7.1 kg (2x 15.7 lbs)	62 kg (137 lbs)

<sup>3)</sup> Cylinder with valve are not included in delivery

<sup>4)</sup> Weight: PAE compl. with cylinder

#### Technical data

Operating medium .....CO<sub>2</sub> - gaseous  
Working pressure .....140 bar (2030 psi)  
Test pressure .....210 bar (3045 psi)  
Temperature range .....-20 °C to +50 °C (-4 °F to +122 °F)  
Pilot cylinder volume .....5.4 l or 10.7 l  
Thread connection .....for precision steel pipe 6x1

#### Product sheets also applying

Weighing device WE4 .....see ad-on part cylinder  
Weight for weighing device 0.16 kg / 0.3 kg .....see ad-on part cylinder  
Release device EM 24 V DC .....see control device  
Lever - cylinder valve EM release .....see control device

#### Application

The release device PAE must only be used in accordance with system approval in stationary carbon dioxide, IG-01 (argon), IG-100 (nitrogen), FK-5-1-12 and HFC-227ea fire extinguishing systems. The release device PAE provides all pneumatic system parts with carbon dioxide (CO<sub>2</sub>) as work medium and is used to activate:

- Cylinder batteries
- Selector valves
- Pneumatic control elements and alarm components (makrofon)
- Pneumatic door closing devices
- Pneumatic pressure relief dampers.

#### Functional description

The activation of the release device PAE occurs electrically (release device EM). Thus the toggle valve on the pilot cylinder is opened and the carbon dioxide (CO<sub>2</sub>) flows through the connected pipe assembly respectively the hose to the pneumatic system components of the fire extinguishing system. Depending on the version a 5.4 l (1.43 US.liq.gal) or 10.7 l (2.83 US.liq.gal) pilot cylinder is used. The PAE with reserve has an additional pilot cylinder (reserve). The entire release device PAE is fastened onto a bearing structural element via a U-profile.

#### Note

Each PAE has to be installed complete with protective cover only. Exception: If an additional protecting guard is provided (for example enclosure).

#### Included in delivery

Pneumatic release device PAE - CO<sub>2</sub> electrical with adapter connection NPT (911762), operating instructions PAE-CO<sub>2</sub> as well as fastenings

additionally for PAE with protective cover:

Protective cover PAE .....885322

## Pneumatic Release Device PAE CO<sub>2</sub>

### Electrical with Protective Cover UL/FM(Optional)

#### Not included in delivery

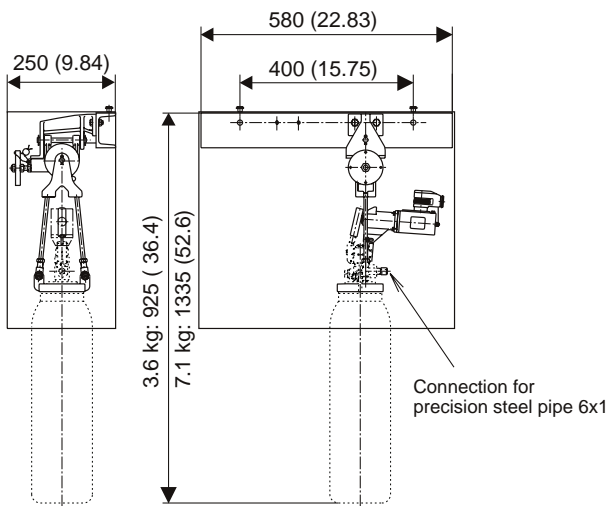
Cylinder with valve 5.4 l / 10.7 l:

- CO<sub>2</sub> - Cylinder UL, EU .....see cylinder filled
- Pre-assembled connection pipe ...see operating instructions PAE
- Support weighing device PAE ...886350, see mounting accessories
- Reset tool .....885530, see control device
- Monitoring loss pneum. actuat. device ...888998, see monitoring device
- Monitoring for release device EM .....885740, see monitoring device

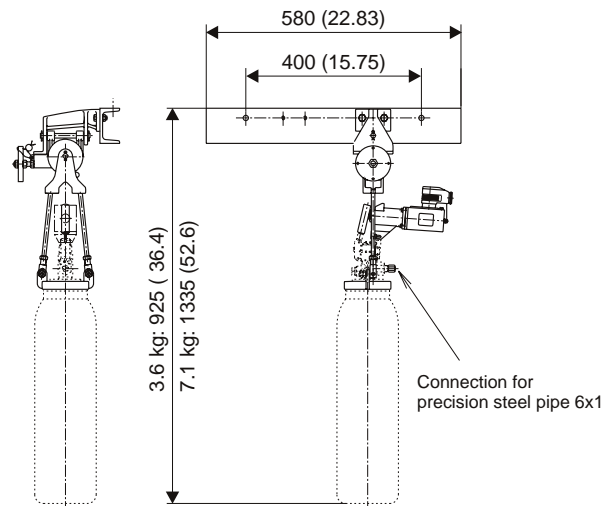
#### Dimension drawing

Dimensions in mm (inch)

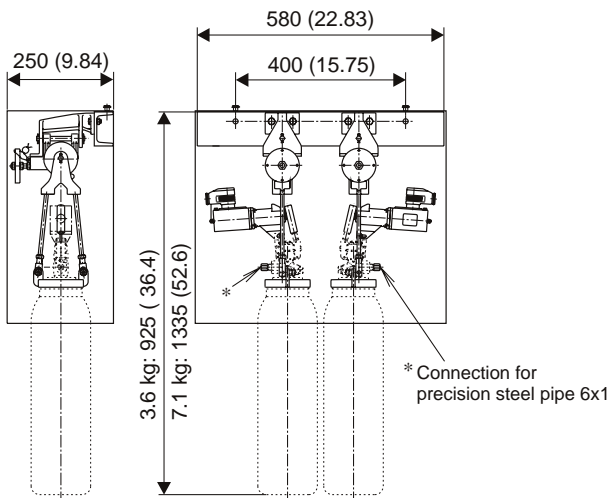
PAE - CO<sub>2</sub> electrical with protective cover



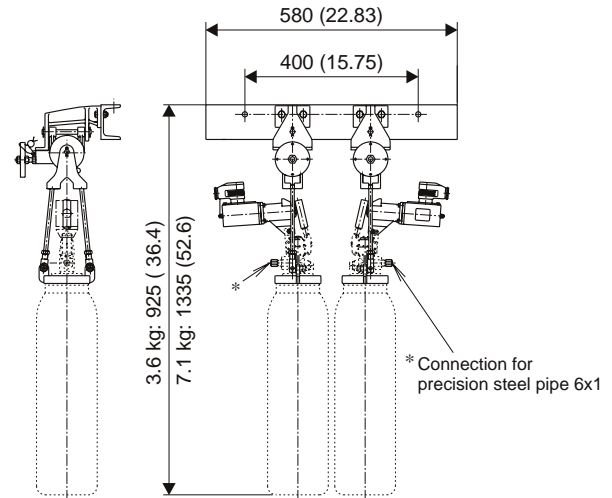
PAE - CO<sub>2</sub> electrical without protective cover



PAE - CO<sub>2</sub> electrical with reserve with protective cover



PAE - CO<sub>2</sub> electrical without reserve with protective cover



## Pneumatic Release Device PAE CO<sub>2</sub>

### Electrical DOT UL/FM(Optional)

#### Approvals



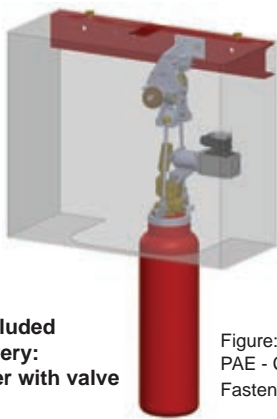
- 1) Part of the system approval (SFFECO Prime FK, SFFECO Prime 227)
- 2) Listed system covered by UL-File EX15997 (SFFECO Prime FK, SFFECO Prime 227)

#### SAP designation

part no. 911755: PAE-CO<sub>2</sub>-EM-6,8kg compl. DOT FM/UL

#### Maintenance

see operating instructions PAE-CO<sub>2</sub> part no. 885374



**Not included  
in delivery:  
Cylinder with valve**

Figure:  
PAE - CO<sub>2</sub> electrical with protective cover  
Fastening material not shown

Pneumatic release device DOT FM/UL		Part no.	Amount filled <sup>3)</sup>	Weight <sup>4)</sup> approx.
PAE - CO <sub>2</sub> electrical	with protective cover	911755	6.8 kg (15.0 lbs)	38 kg (84 lbs)
	without protective cover	911754		34 kg (75 lbs)
PAE - CO <sub>2</sub> electrical with reserve	with protective cover	911757	2x 6.8 kg (2x 15.0 lbs)	66 kg (146 lbs)
	without protective cover	911756		62 kg (137 lbs)

<sup>3)</sup> Cylinder with valve are not included in delivery

<sup>4)</sup> Weight: PAE compl. with cylinder

#### Technical data

Operating medium .....CO<sub>2</sub> - gaseous  
Working pressure .....140 bar (2030 psi)  
Test pressure .....210 bar (3045 psi)  
Temperature range .....-20 °C to +50 °C (-4 °F to +122 °F)  
Pilot cylinder volume .....10.7 l (2.83 US.liq.gal)  
Thread connection .....for precision steel pipe 6x1

#### Product sheets also applying

Weighing device WE4 .....see ad-on part cylinder  
Weight for weighing device 0.3 kg .....see ad-on part cylinder  
Release device EM 24 V DC .....see control device  
Lever - cylinder valve EM release .....see control device

#### Application

The release device PAE must only be used in accordance with system approval in stationary carbon dioxide, IG-01 (argon), IG-100 (nitrogen), FK-5-1-12 and HFC-227ea fire extinguishing systems. The release device PAE provides all pneumatic system parts with carbon dioxide (CO<sub>2</sub>) as work medium and is used to activate:

- Cylinder batteries
- Selector valves
- Pneumatic control elements and alarm components (makrofon)
- Pneumatic door closing devices
- Pneumatic pressure relief dampers.

#### Note

Each PAE has to be installed complete with protective cover only. Exception: If an additional protecting guard is provided (for example enclosure).

#### Functional description

The activation of the release device PAE occurs electrically (release device EM). Thus the toggle valve on the pilot cylinder is opened and the carbon dioxide (CO<sub>2</sub>) flows through the connected pipe assembly respectively the hose to the pneumatic system components of the fire extinguishing system. The PAE with reserve has an additional pilot cylinder (reserve). The entire release device PAE is fastened onto a bearing structural element via a U-profile.

#### Included in delivery

Pneumatic release device PAE - CO<sub>2</sub> electrical with adapter connection NPT (911762), operating instructions PAE-CO<sub>2</sub> as well as fastenings

additionally for PAE with protective cover:

Protective cover PAE .....885322

#### Not included in delivery

Cylinder with valve 10.7 l:

- CO<sub>2</sub> - Cylinder DOT - UL .....  
(Filled DOT cylinders may not be transported in Europe)

Pre-assembled connection pipe ...see operating instructions PAE  
Support weighing device PAE ...886350, see mounting accessories  
Reset tool .....885530, see control device  
Monitoring loss pneum. actuat. device ...888998, see monitoring device  
Monitoring for release device EM .....885740, see monitoring device

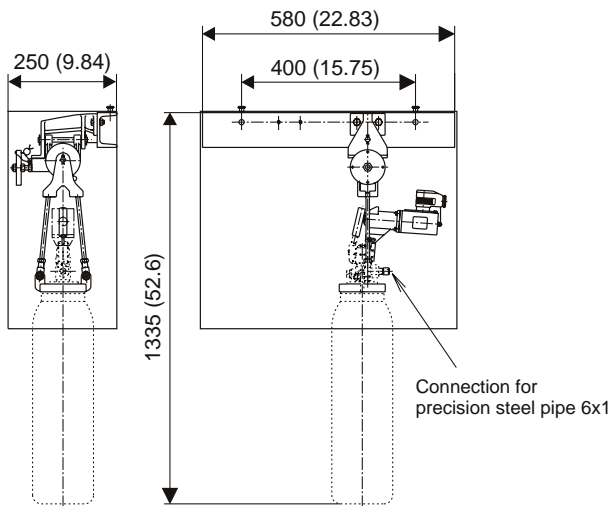
## Pneumatic Release Device PAE CO<sub>2</sub>

### Electrical DOT UL/FM(Optional)

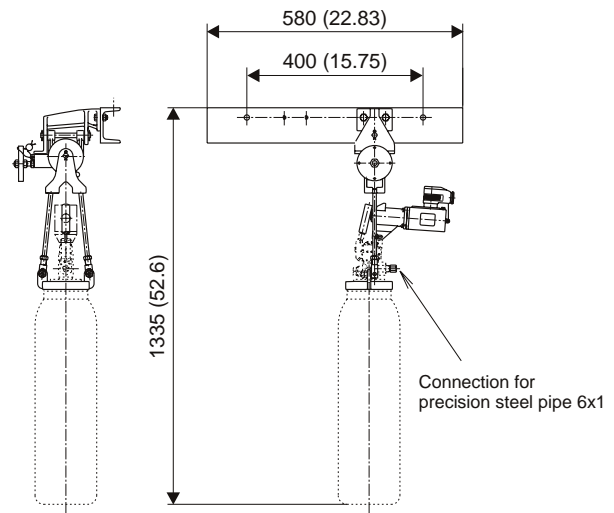
#### Dimension drawing

Dimensions in mm (inch)

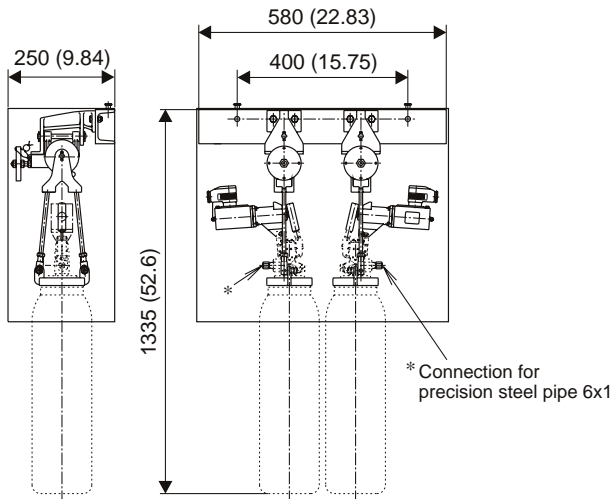
PAE - CO<sub>2</sub> electrical with protective cover



PAE - CO<sub>2</sub> electrical without protective cover



PAE - CO<sub>2</sub> electrical with reserve with protective cover



PAE - CO<sub>2</sub> electrical without reserve with protective cover

