

Adapter M12x1.5 – G1/8



Approvals

(VdS approval is not required!)



1) Listed system covered by UL-file EX15997 (SFFECO Prime SFFECO Prime 227)

2) Part of the system approval

SAP designation

e.g. part no. 887644: Adapter M12x1.5 - G1/8

Maintenance

maintenance-free

Designation	Part no.	Weight
Adapter M12x1,5 - G1/8	887644	0.018 kg (0.04 lbs)

Technical data

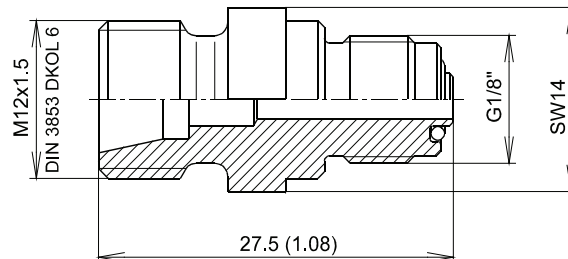
Operating mediumFK-5-1-12, HFC-227ea,
.....argon, nitrogen, CO₂, IG55, IG541
Operating temperature range:
.....-20 °C to +56 °C (-4 °F to 132 °F)
UL / ULC / FM-18 °C to +50 °C (0 °F to 122 °F)
Working pressure360 bar (5221 psi)
Materialbrass

Application

To the connection of the hose DN4 / pilot pipe with:
- Valves type B0481, valves type B0482
- Valves type B0480, BAS
- Release device pneumatic/manual
- Release device pneumatic

Dimension drawing

Dimensions in mm (inch)



Adapter Hose DN40, DN50 ISO – NPT (Optional)

Approvals



1) Listed system covered by UL-file EX15997 (SFFECO Prime FK, SFFECO Prime 227)

2) Part of the system approval



SAP designation

e.g. part no. 887450: Adapter hose DN40 ISO-NPT

Maintenance

maintenance-free

Designation		Part no.	Weight kg (lbs)
Adapter hose DN40 ISO-NPT	DN40	887450	0.3 (0.66)
	DN50	887451	0.4 (0.88)

Technical data

Max. working pressure60 bar (870 psi)

Thread NPTacc. to ANSI / ASME B1.20.1-NPT

ISOacc. to EN 10226

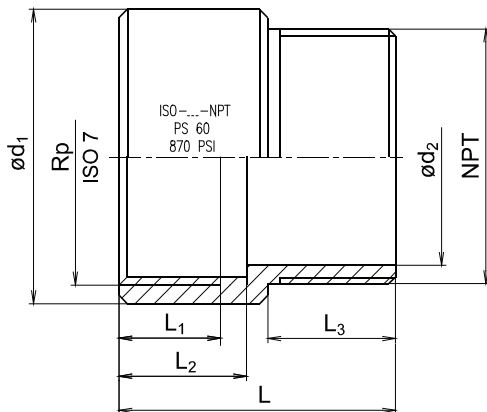
Materialsteel, galvanized acc. to EN 12329 - Fe/Zn12

Application

To connect FK-5-1-12 and HFC-227ea system parts with ISO thread to NPT pipes.

Dimension drawing

Dimensions in mm (inch)



Adapter	Rp	NPT	$\varnothing d_1$	$\varnothing d_2$	L	L ₁	L ₂	L ₃
DN40	1.1/2	1.1/2-11,5	57 (2.24)	41,5 (1.63)	60 (2.36)	20 (0.79)	25 (0.98)	30 (1.18)
DN50	2	2-11,5	69 (2.72)	51 (2.01)	65 (2.56)	25 (0.98)	30 (1.18)	30 (1.18)