

Check Valve DN50 CR and CR NPT



Approvals / CE marking



1) Listed system covered by UL-file EX15997 (SFFECO Prime FK, SFFECO Prime 227)

2) Part of the system approval

SAP designation

e.g. part no. 887870: Check valve DN50 CR

Maintenance

see technical description check valve part no. 887871

Designation	Part no.	Weight
Check valve DN50	CR	887870
	CR NPT	912071
		5.15 kg (11.35 lbs)

Technical data

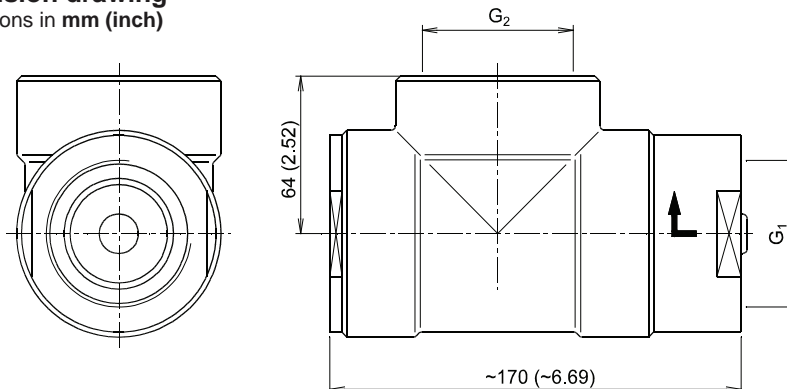
TypeMX-CR, MX-CR NPT
 Medium.....FK-5-1-12, HFC-227ea, nitrogen
 Nominal diameterDN50
 Working pressure60 bar (870 psi)
 Test pressure90 bar (1305 psi)
 Opening pressure≤ 3 bar (43.05 psi)
 Leakage rate at 20 bar (290 psi)≤ 20 bubbles / 1 min
 Operating temperature range:
-20 °C to +50 °C (-4 °F to 122 °F)
 UL / ULC / FM-18 °C to +50 °C (0 °F to 122 °F)
 Check valvecomplies with EN 12094-13
 CE conformityacc. to Construction Products Regulation (EU)
No. 305/2011

Material / Surface

Housingsteel, galvanized
 Internal componentsstainless steel
 Springstainless steel
 SealNBR

Dimension drawing

Dimensions in mm (inch)



Check valve	G ₁	G ₂
CR	Rp 2 (EN 10226)	Rc 2 (ISO 7)
CR NPT	2-11.5-NPT	2-11.5-NPT

Application

When using more than one cylinder at a conjointly pipework a check valve is to be used with each cylinder between cylinder and pipework or manifold.
 This prevents that extinguishant gets to not operated valves or escapes unaimed with dismantled cylinders.

Marking

manufacturer/year (MX/xx), type, nominal diameter (DN50), working pressure (PB 60), approval sign (VdS, CE), serial number

Included in delivery

Check valve CR / CR NPT
 Technical description check valve part no. 887871