



شركة المصنع السعودي لأجهزة الإطفاء  
SAUDI FACTORY FOR FIRE EQUIPMENT Co.

Empowering  
a Safer Future for  
the Kingdom



## Excel Series 2 Fire Pumps



Electrical Diesel Jockey (EDJ)  
Diesel Jockey (DJ)  
Electrical Jockey (EJ)

- ❖ for Foam Systems
- ❖ for Deluge System
- ❖ for Hydrant Systems
- ❖ for Sprinkler Systems
- ❖ for Hose Reel / Rack Systems

Quality Approvals for Various Products and Services

VER: 00-12/25

## The Global Standard in Fire Safety

Since 1983, SFFECO has been the trusted name and a recognized global leader in manufacturing top-tier fire-fighting equipment. We don't just offer products; we provide total fire safety solutions like fire doors, fire cabinets, fire pumps, fire extinguishing systems, etc. Our commitment to excellence is certified by multiple international standards, including ISO 9001 (Quality), ISO 14001 (Environmental), and ISO 45001 (Health & Safety). With state-of-the-art facilities in Riyadh and Dubai, we ensure every product meets rigorous international quality standards.

## One-Stop-Shop for Fire Protection

SFFECO is your single source for everything in fire protection and fire-fighting. Represented in over 100 countries through a vast network of dealers, our innovative approach and comprehensive, end-to-end product range deliver the full spectrum of solutions you need. We're dedicated to keeping you safe and updated, constantly integrating the latest fire-fighting technology into our knowledge and services. Choose SFFECO and get certified quality, global reach, and pioneering innovation—all in one place.



### Quality Services

SFFECO is deeply committed to ensuring superior performance and accuracy in every product it delivers. This dedication is maintained through continuous, close collaboration with a wide array of stakeholders, including key certification bodies, government regulatory agencies, industry partners, and leading technology associations. This concerted effort focuses on the development and delivery of truly innovative and high-quality fire-fighting solutions. The commitment to excellence is rigorously upheld through extensive product testing and evaluation, alongside a strict, ongoing process for continued product quality compliance, guaranteeing that SFFECO's equipment operates with assured reliability when it matters most.

SFFECO is dedicated to providing fire safety products of the highest quality and performance. We achieve this by working closely with certification bodies, government regulatory agencies, industry partners, and technology associations. This collaboration ensures our innovative products are backed by extensive product testing and evaluation, and maintained through continuous quality compliance.

As global leaders since 1983, SFFECO believes in manufacturing quality products and offering exceptional service standards worldwide. Our primary goal is to reward our customers by keeping their investments safe and secure. Our manufacturing plant has steadily grown and is now equipped with modern hi-tech equipment and staffed by highly skilled professionals. With optimal ISO-certified operations, we consistently roll out products that match global standards to serve the needs of the growing fire safety market.



Empowering  
a **Safer Future** for  
the Kingdom



# Fire Pumps

## Excel Series 2



SFFECO supplies fire pump units that comply with Local Authority requirements and NFPA 20 selection and operation standards. All SFFECO fire pumps are SASO approved, ensuring reliability and regulatory compliance.

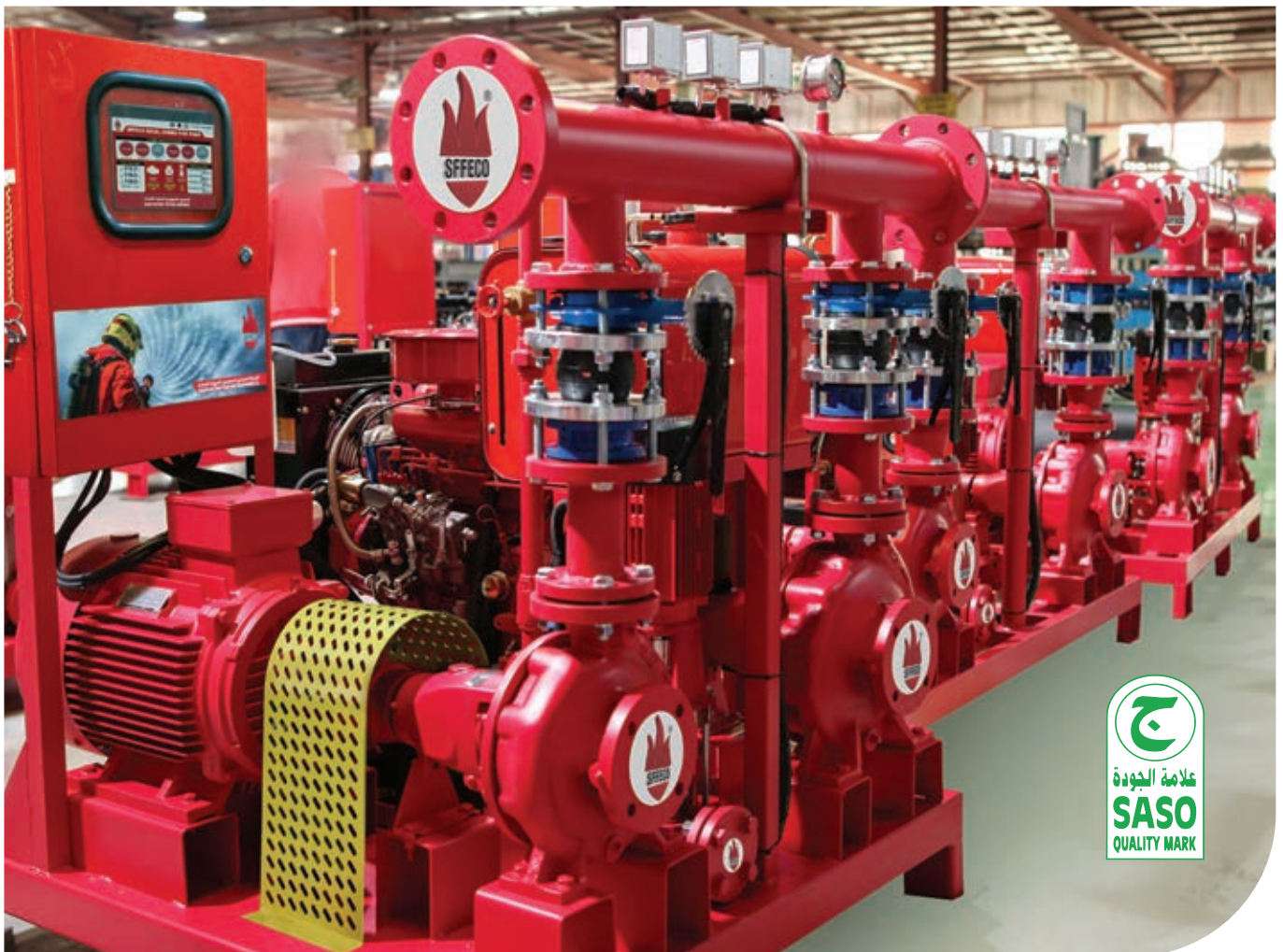
The SFFECO Excel Series II Fire Pumps are pre-fabricated skid-mounted units designed for compactness and ease of handling. All pumping components, drivers, and controllers are pre-piped, pre-wired, skid mounted, and factory tested for quick installation and simplified maintenance.

Excel Series II pump control panels are equipped with a Human Machine Interface (HMI). The HMI allows operators to monitor performance, set control parameters, manage sequences, and troubleshoot through alarms and event notifications.

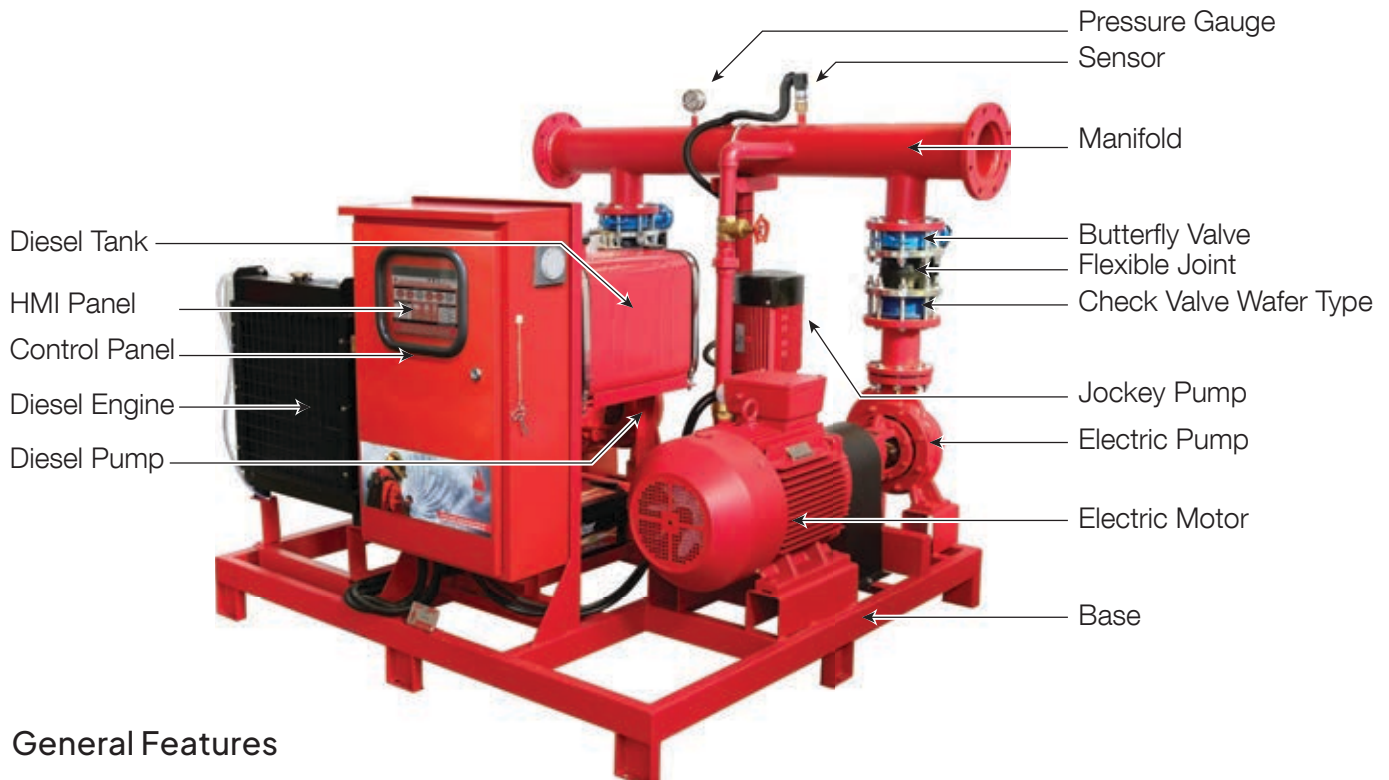
Excel Series II Fire Pumps are available as standard packages ranging from 50 GPM to 1500 GPM, with pressure ratings from 6 to 14 bar.

### Excel Series is the right Choice for most of the Fire Fighting Applications like:

Fire Hose Cabinet Systems, Automatic Sprinkler Systems, Deluge Systems, Fire Hydrant Systems, Foam Systems, etc.



# Fire Pumps Components



## General Features

- ❖ Space Saving Design Efficiency:
- ❖ Nothing beat Excel Series II packages since allows to fit in to small spaces.
- ❖ Easy to Install & Handle:
- ❖ Available in capacities from 50 GPM up to 1500 GPM and pressure range up to 12 BAR.
- ❖ Pre- fabricated, pre-piped wired, factory tested unit.
- ❖ In compliances with local civil defense requirement & NFPA 20 selection & operation procedure.
- ❖ Pumps coupled with heavy duty trouble free electrical & diesel drivers.
- ❖ Dynamic balanced pumps impellers.
- ❖ Pump set piping is hydrostatically tested to ensure piping integrity.

The Standard Models of “Excel Series 2” are EDJ, DJ and EJ.

Other specifications are also available as per customer request.

“Excel Series II” Packages Offers Completed Skid Mounted Unit including High quality Horizontal End Suction / Split Case Pumps / Vertical Turbine Pumps that coupled with Heavy duty (Electrical/ Diesel) drivers that assembled with full discharge line control Gate & Butterfly Check Valves along with flexible joints. Pressure Switches & Gauge fitted on well Supported Header, where all pre-piped, wired, & fabricated in Common Compact Skid is Fully Automatic Operated through latest Design Control Panel.

“Excel Series II” Innovated design has different Combinations & Models that suite different clients requirements, as well as Hazard application needs.

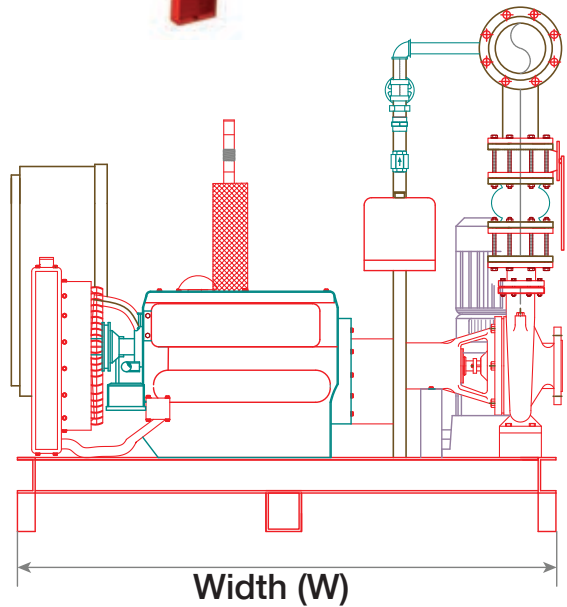
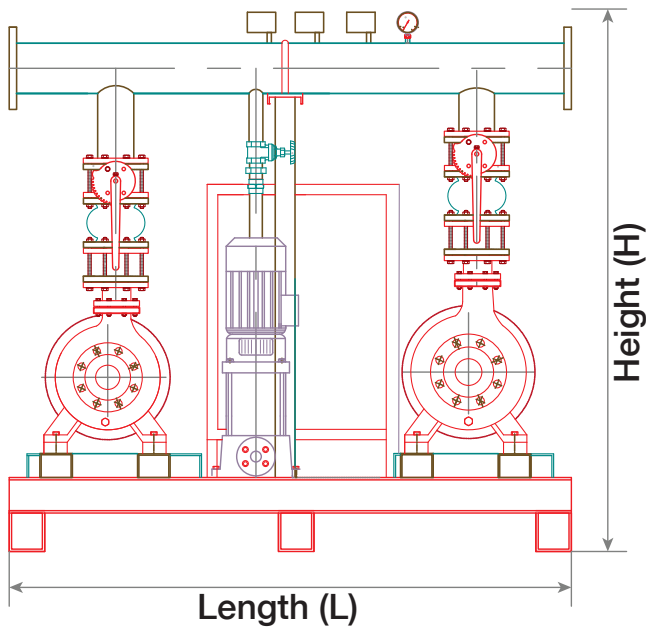
# Fire Pumps EDJ (Electric Diesel Jockey)



Consist of Main End Suction Pump driven by Electrical Motor, Stand by End Suction Diesel Pump driven by Diesel Engine, & Vertical multistage (Jockey) (Maintenance) Pump that all are assembled with discharge line accessories, as well as connected with Skid Mounted HMI Control Panel.

Standard Models:-

|         |         |         |          |         |
|---------|---------|---------|----------|---------|
| 50 GPM  | 120 GPM | 150 GPM | 250 GPM  | 300 GPM |
| 350 GPM | 500 GPM | 750 GPM | 1000 GPM |         |



## Specifications

| (GPM)               | W (MM) | H (MM) | L (MM) | DIESEL (HP) | MOTOR (HP) | JOCKEY (HP/GPM) | (KG) | HEADER PIPE |
|---------------------|--------|--------|--------|-------------|------------|-----------------|------|-------------|
| 1000 Gpm @ 7 bar    | 1800   | 1820   | 2100   | 110         | 100        | 5.5/50          | 1640 | 6"          |
| 750 Gpm @ 7 bar     | 1750   | 1650   | 1950   | 85          | 75         | 5.5/50          | 1440 | 6"          |
| 500 Gpm @ 7 bar     | 1700   | 1570   | 1740   | 60          | 50         | 5.5/50          | 1100 | 6"          |
| 350 Gpm @ 7 bar     | 1540   | 1440   | 1740   | 40          | 40         | 3/20            | 960  | 4"          |
| 250/300 Gpm @ 7 bar | 1520   | 1370   | 1230   | 40          | 30         | 3/17.6          | 850  | 4"          |
| 120/150 Gpm @ 7 bar | 1520   | 1300   | 1230   | 40          | 20         | 3/17.6          | 785  | 2.5"        |
| 50 Gpm @ 7 bar      | 800    | 1150   | 1230   | 12          | 5.5        | 3/17.6          | 315  | 2"          |

Other models or capacities are available upon request

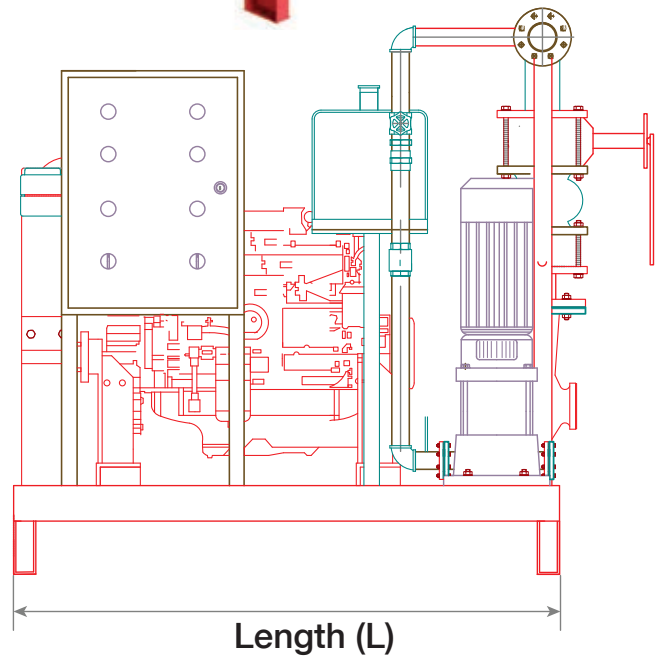
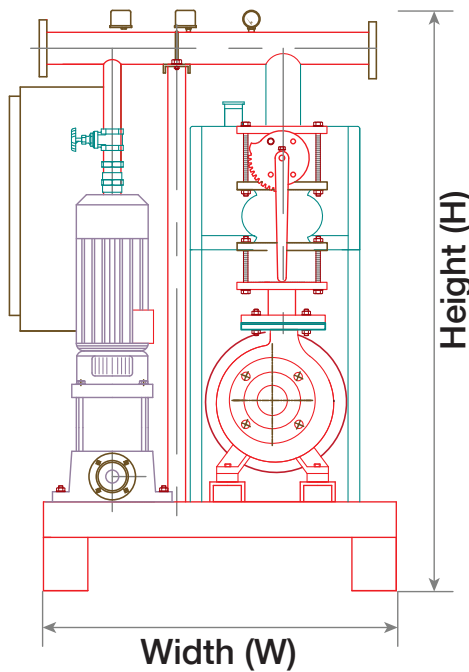
# Fire Pumps Diesel Jockey (DJ)



Consist of Main End Suction Diesel Pump driven by Diesel Engine, & Vertical Multistage Jockey (maintenance) Pump that all are assembled with discharge line accessories, as well as connected with Skid Mounted HMI Control Panel.

Standard Models:-

|         |         |         |         |         |
|---------|---------|---------|---------|---------|
| 50 GPM  | 120 GPM | 150 GPM | 250 GPM | 300 GPM |
| 350 GPM | 500 GPM | 750 GPM |         |         |



## Specifications

| (GPM)               | W (MM) | H (MM) | L (MM) | DIESEL (HP) | JOCKEY (HP/GPM) | (KG) | HEADER PIPE |
|---------------------|--------|--------|--------|-------------|-----------------|------|-------------|
| 750 Gpm @ 7 bar     | 1100   | 1650   | 1750   | 85          | 5.5/50          | 910  | 6"          |
| 500 Gpm @ 7 bar     | 1000   | 1570   | 1740   | 60          | 5.5/50          | 670  | 6"          |
| 250/300 Gpm @ 7 bar | 800    | 1370   | 1540   | 40          | 3/17.6          | 520  | 4"          |
| 120/150 Gpm @ 7 bar | 800    | 1200   | 1540   | 40          | 3/17.6          | 484  | 2"          |
| 50 Gpm @ 7 bar      | 850    | 1150   | 880    | 12          | 3/17.6          | 197  | 1.5"        |

Other models or capacities are available upon request

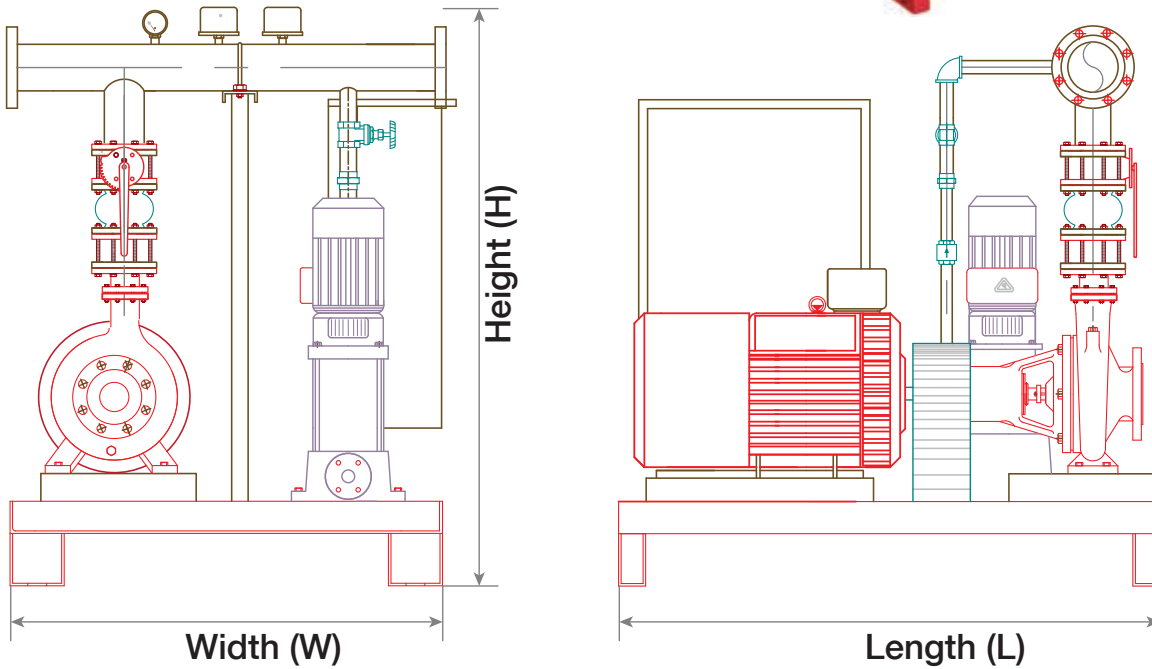
# Fire Pumps Electrical Jockey (EJ)



Consist of Main End Suction Pump driven by Electrical Motor, & Vertical Multistage Jockey (maintenance) Pump that all are assembled with discharge line accessories, as well as connected with Skid Mounted HMI Control Panel.

Standard Models:-

|         |         |         |         |
|---------|---------|---------|---------|
| 50 GPM  | 120 GPM | 150 GPM | 250 GPM |
| 300 GPM | 350 GPM | 500 GPM |         |



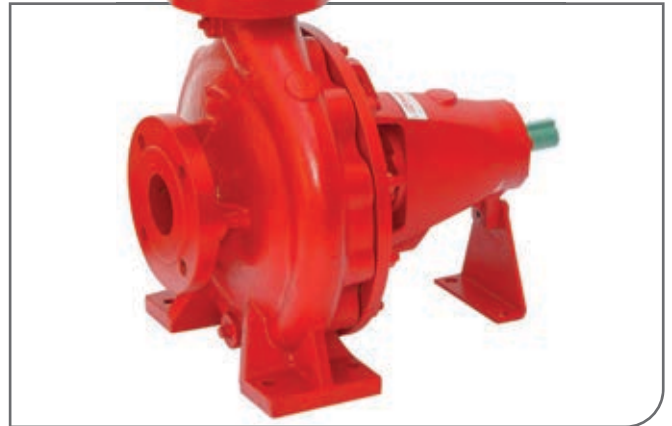
## Specifications

| (GPM)   | W (MM) | H (MM) | L (MM) | MOTOR (HP) | JOCKEY (HP/GPM) | (KG) | HEADER PIPE |
|---------|--------|--------|--------|------------|-----------------|------|-------------|
| 500     | 900    | 1550   | 1400   | 50         | 5.5/50          | 570  | 6"          |
| 250/300 | 800    | 1370   | 1540   | 30         | 3/17.6          | 420  | 4"          |
| 120/150 | 800    | 1140   | 1540   | 20         | 3/17.6          | 309  | 2"          |
| 50      | 700    | 1300   | 900    | 5.5        | 3/17.6          | 175  | 1.5"        |

Other models or capacities are available upon request

## Horizontal End Suction Pumps

- ❖ The casing is a heavy duty design. Back pull out design for fast and easy maintenance. Replaceable wearing ring to assure optimum efficiency.
- ❖ Removable and adjustable support foot provides added rigidity and ease of maintenance. Stainless steel shaft sleeve prevents damage to the shaft reduces the maintenance cost. Mechanical seal or soft packing on request.



## Features

- ❖ Capacity up to 1500 GPM.
- ❖ Rear pull out design supplied as standard with spacer coupling that allow removal of rotating elements without disturbing piping Connection.
- ❖ Hydraulically balanced Impeller, assure smooth operation & long bearing life limit
- ❖ Available in Electrical motor or Diesel Engine driven configuration.
- ❖ Suitable for Commercial, Residential & Industrial applications.
- ❖ Top centre line discharge with foot supported casing

## Horizontal Split Case Pumps

- ❖ Suction & Discharge flanges are on common Horizontal center line.
- ❖ High Quality Cast iron Casing with Bronze wearing ring.
- ❖ Grease lubrication ball bearing
- ❖ Double suction type impeller offers low pulsation.
- ❖ Removable drip pocket with tapped drain Outlet stuffing box.

## Specifications

- ❖ Capacity up to 2000 GPM.
- ❖ Split case design for easy maintenance & Upkeep. Due to easy removal of Upper casing & Inner assembly without disturbing piping Including Stuffing boxes, & bearing Housing.
- ❖ Engine configuration available in Electrical Motor or Diesel
- ❖ Suitable for Commercial, Residential and Industrial Applications.



# Fire Pumps Diesel Engine



## General

MegaForce Diesel Engines are specially tailored to meet the customer's specification and optimum performance, thus guaranteeing the product best suited to the application.

Engine Fuel Systems calibrated to specific power and speed requirements, ensure MegaForce Diesel Engines for maximum efficiency.

MegaForce Diesel Engines have long periods of idleness, coupled to routine testing at maximum speed and at times with no load, necessitates a power unit of exceptional qualities. The range offers from small cylinder engine giving an output of 19kW @ 2900 rpm to a high powered configured engine of 400kW. All power units are manufactured to comply with strict control procedures (ISO 9001) and fully tested against the applicable standards in line with client requirements.

## Benefits

- ❖ High reliability during power failure: Megaforce diesel engines operates independently of electrical supply, ensuring uninterrupted fire protection.
- ❖ Immediate start-up: Diesel engines start quickly and deliver full power without warm-up delays during emergencies.
- ❖ Robust and durable design: Built to withstand harsh conditions and continuous operation in critical situations.
- ❖ Consistent high torque output: Ideal for driving fire pumps at required pressure and flow rates.
- ❖ Fuel availability and storage: Diesel fuel can be safely stored on-site for long durations, ensuring readiness.
- ❖ Lower risk of ignition: Diesel fuel is less flammable than gasoline, improving overall system safety.
- ❖ Minimal electronic dependency: Mechanical operation ensures reliability even in extreme environments.
- ❖ Long service life: Proven longevity reduces lifecycle costs and maintenance frequency.
- ❖ Trusted performance worldwide: Commonly used in critical fire protection systems across industrial, commercial, and infrastructure projects.



## Basic Components:

- ❖ Flywheel Housing
- ❖ Fly Wheel
- ❖ Fuel Pipes
- ❖ Rigid Mounts
- ❖ Fresh Water Circulating Pump
- ❖ Thermostat
- ❖ Fuel Pump Governor
- ❖ Fuel Lift Pump
- ❖ Full Flow Fuel Filters
- ❖ Full Flow Lub. Oil Filters
- ❖ Exhaust manifold
- ❖ Intake Manifold Adaptor
- ❖ Exhaust Manifold Adaptor

| Model   | Rating kW (HP) | RPM  | Configuration                 | Bores x Stroke (mm) | Diameter (mm) | Length (mm) | Width (mm) | Height (mm) |
|---------|----------------|------|-------------------------------|---------------------|---------------|-------------|------------|-------------|
| MFS 25  | 19 (25)        | 3000 | 3 Cylinder /4 Stroke / Inline | 80 x 90             | 42            | 600         | 515        | 608         |
| MFS 40  | 30 (40)        | 2900 | 4 Cylinder /4 Stroke / Inline | 85 x 95             | 48            | 735         | 515        | 645         |
| MFS 60  | 45 (60)        | 3000 | 4 Cylinder /4 Stroke / Inline | 95 x 100            | 48            | 735         | 515        | 650         |
| MFS 85  | 63 (85)        | 3000 | 4 Cylinder /4 Stroke / Inline | 102 x 118           | 60            | 810         | 695        | 780         |
| MFS 110 | 82 (110)       | 3000 | 4 Cylinder /4 Stroke / Inline | 113 x 125           | 60            | 920         | 595        | 800         |
| MFS 130 | 97 (130)       | 3000 | 6 Cylinder /4 Stroke / Inline | 113 x 120           | 60            | 1280        | 700        | 985         |
| MFS 150 | 112 (150)      | 3000 | 6 Cylinder /4 Stroke / Inline | 115 x 125           | 60            | 1280        | 700        | 985         |
| MFS 180 | 134 (180)      | 3000 | 6 Cylinder /4 Stroke / Inline | 115 x 125           | 60            | 1280        | 700        | 995         |
| MFS 220 | 164 (220)      | 3000 | 6 Cylinder/4 Stroke/ Inline T | 126 x 130           | 70            | 1520        | 950        | 1180        |
| MFS 270 | 201 (270)      | 3000 | 6 Cylinder/4 Stroke/ Inline T | 126 x 130           | 70            | 1520        | 950        | 1180        |
| MFS 300 | 224 (300)      | 3000 | 6 Cylinder/4 Stroke/ Inline T | 126 x 140           | 70            | 1520        | 950        | 1180        |
| MFS 320 | 239 (320)      | 3000 | 6 Cylinder/4 Stroke/ Inline T | 126 x 140           | 70            | 1520        | 950        | 1180        |
| MFS 350 | 261 (350)      | 2900 | 6 Cylinder/4 Stroke/ Inline T | 126 x 140           | 70            | 1520        | 950        | 1180        |
| MFS 375 | 280 (375)      | 2900 | 6 Cylinder/4 Stroke/ Inline T | 126 x 155           | 70            | 1520        | 950        | 1200        |
| MFS 425 | 317 (425)      | 2900 | 6 Cylinder/4 Stroke/ Inline T | 135 x 169           | 100           | 1497        | 904        | 1233        |
| MFS 475 | 354 (475)      | 2900 | 6 Cylinder/4 Stroke/ Inline T | 135 x 169           | 100           | 1497        | 904        | 1233        |
| MFS 536 | 400 (536)      | 2900 | 6 Cylinder/4 Stroke/ Inline T | 135 x 169           | 100           | 1497        | 904        | 1233        |

# Fire Pumps

## Vertical Multistage



### General

Close coupled vertical multistage pump with all stainless steel parts which are driven by a standard TEFC motor, discharge and suction in the same line.

Aluminum casing, single phase motor. Class F and IP55 are standard supply.

Standard supply for liquid temperature upto 90°C, high temperature pump are available on request. Mechanical seal is Tungsten Carbide / Graphite.

All the parts in contact with liquid are made of 304 Stainless Steel, The suction and discharge head can be made of cast iron on request.



### Specifications

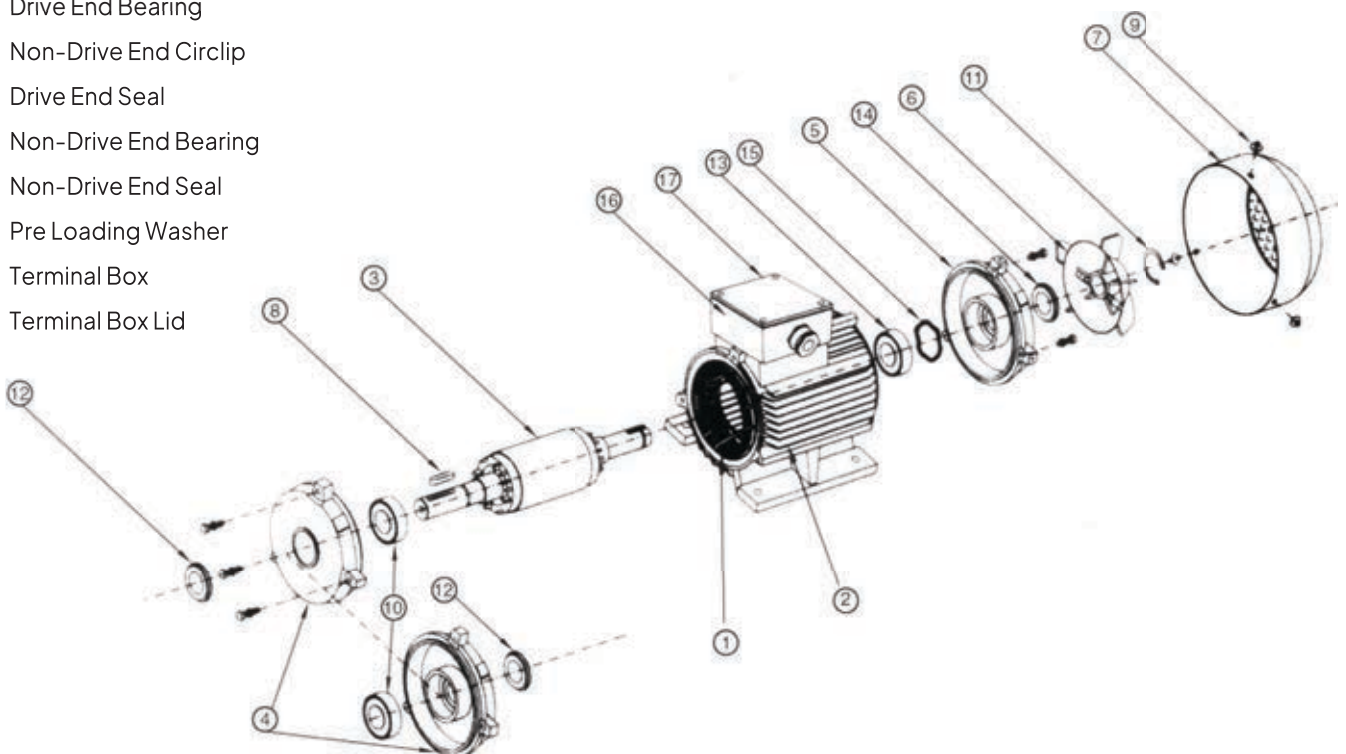
| Parts           | Material             |
|-----------------|----------------------|
| Pump Head       | Cast Iron EN-GJL-200 |
| Pump Head Cover | Stainless Steel 304  |
| Shaft           | Stainless Steel 304  |
| Base            | Stainless Steel 304  |
| Shaft Seal      | Mechanical           |
| Base Plate      | Cast Iron EN-GJL-200 |
| Rubber Parts    | EDPM or FKM          |
| Impeller        | Stainless Steel 304  |
| Chamber         | Stainless Steel 304  |
| Outer Sleeve    | Stainless Steel 304  |

**Note: Stainless Steel on Request**



## Parts:

1. Wound Stator
2. Housing
3. Rotor
4. Drive End Shield
5. Drive End Shield
6. Fan
7. Fan Cover
8. Key
9. Fan Cover Screw
10. Drive End Bearing
11. Non-Drive End Circlip
12. Drive End Seal
13. Non-Drive End Bearing
14. Non-Drive End Seal
15. Pre Loading Washer
16. Terminal Box
17. Terminal Box Lid



## Electric Motor

Hitec multipurpose motors are the ideal choice for installation in arduous environmental conditions. The range offers a variety of induction motors with a power rating of 0.09kW (0.12HP) to high powered motors providing 160kW (220HP). Class F and IP55 are standard supply. Motors for other voltages, frequencies, specifications and non-standard features are available on request.

Hitec motor series are highly engineered to cope up with sudden load increases, longer thermal life, higher altitudes and voltage variants. All the motors are manufactured under strict quality control procedures and are fully tested against the applicable standards.

Hitec uses integrated design management techniques for enhancing the efficiency and durability of its products. Reliability, integrity, simplicity in design and ease of maintenance, all endorse the product as a world leader in electric motors.

Hitec motors can handle load and continue working reliability for long hours. The balanced design and the precision of the motor ensure superb performance.

## General

The Excel Series II Fire Pump Unit Controller acts as the central intelligence of the complete pump package, designed to control and continuously monitor the operation of the Main, Standby, and Jockey pump drivers. It manages pump operations in both manual and automatic modes, ensuring reliable and responsive performance during normal conditions and emergency situations. The controller automatically starts and stops the pump drivers based on predefined operating parameters and system demands.

The Fire Pump Package Controller detects operating signals through a set of built-in pressure and flow sensing switches, which constantly reflect the system's real-time hydraulic conditions. When system pressure falls below the preset threshold, the controller activates the appropriate pump drivers—whether electric, diesel, or jockey pumps—to restore required pressure. In the event of a power failure or a significant pressure drop, the controller seamlessly initiates the standby pump driver, ensuring uninterrupted fire protection performance.

SFFECO's Excel Series II Controllers are pre-wired, factory tested, and fully integrated prior to shipment, ensuring consistent quality and reliability. Each unit is delivered ready for immediate installation and operation, minimizing site work, reducing commissioning time, and ensuring dependable performance in critical fire protection applications.

## Control Panel with Optional HMI Controller

The HMI Controller is a tool that will help the pump operators to visualize and monitor the process, provide control targets and set-points, execute programs and initiate sequences, and troubleshoot problems via alarms, and events.



## Features

- ❖ Selective Auto and Manual function
- ❖ Quick parameter change facility
- ❖ Pressure cut-off PLC based programming
- ❖ Automatic or Manual (test) operation
- ❖ DOL Start
- ❖ Star Delta (Optional)
- ❖ Engine RPM (Optional)
- ❖ Pressure Status
- ❖ Battery Status
- ❖ Automatic Battery Charging
- ❖ Analogue pressure transmitter
- ❖ Variable set points on parameters
- ❖ System run time display
- ❖ Pressure down buzzer alarm
- ❖ Fault trip facility status
- ❖ Fault alarm and diagnosis
- ❖ Password protected HMI
- ❖ Standard dry run protection
- ❖ Engine cooling water temperature (Optional)
- ❖ Standard cable marking for easy maintenance
- ❖ Low maintenance cost and available spare parts
- ❖ Compatible with any monitoring systems like BMS (Optional)
- ❖ Stainless Steel Enclosures are available for outdoor applications (Optional).







Since 1983, SFFECO has been a trusted name in fire protection, known for innovation and quality worldwide.

With state-of-the-art facilities in Riyadh and Dubai, we deliver a complete range of firefighting solutions that meet international standards.

Our innovative approach and comprehensive product portfolio make SFFECO the one-stop destination for reliable fire protection products and services.

## شركة المصنع السعودي لأجهزة الإطفاء SAUDI FACTORY FOR FIRE EQUIPMENT Co.

### FACTORY & HEAD OFFICE - RIYADH

2nd Industrial Area, Al-Kharj Road, Riyadh, KSA, P.O. Box: 58469, Riyadh 11515  
Tel : +966 11 2650070, E-mail: riyadh@sffeco.com.sa

### JEDDAH BRANCH

P.O. Box: 16769, Jeddah - 21474, KSA  
Tel : +966 12 670 6009,  
E-mail: jeddah@sffeco.com.sa

### DAMMAM BRANCH

P.O. Box: 7162, Dammam - 31462, KSA  
Tel : +966 13 8351961,  
E-mail: dammam@sffeco.com.sa

### MADINAH BRANCH

Tel : 0148660959, 0148283256,  
E-mail: madinah@sffeco.com.sa



www.SFFECO.com