



شركة المصنع السعودي لأجهزة الإطفاء
SAUDI FACTORY FOR FIRE EQUIPMENT Co.

Empowering
a **Safer Future** for
the Kingdom

ANGLE VALVES



Quality Approvals for Various Products and Services

VER: 00-12/25



Angle Valve for Fire Hose



SFAV15-UL
SFAV20-UL
SFAV25-UL
SFAV30-UL



General:

SFFECO Fire Hose Angle Valves (90 degrees pattern) are for use on standpipe having inlet and outlet opening of the same size or with the inlet larger than outlet. The valve is made in accordance with UL 668 Hose Valve for Fire Protection Service standards.

Connection:

- ❖ NPT Female taper thread Inlet with NPT female taper thread outlet
- ❖ NPT Female taper thread Inlet with NST(NH) male thread outlet

Marking:

- ❖ UL Mark, Listed EX16343
- ❖ Rated Pressure : 300 PSIG
- ❖ Test Pressure : 600 PSIG

Available Models:

Model	Size	Inlet	Outlet
SFAV15-UL	1.5" x 1.5"	1.5" Female NPT	1.5" Female NPT
SFAV20-UL	1.5" x 1.5"	1.5" Female NPT	1.5" Male NST
SFAV25-UL	2.5" x 2.5"	2.5" Female NPT	2.5" Female NPT
SFAV30-UL	2.5" x 2.5"	2.5" Female NPT	2.5" Male NST

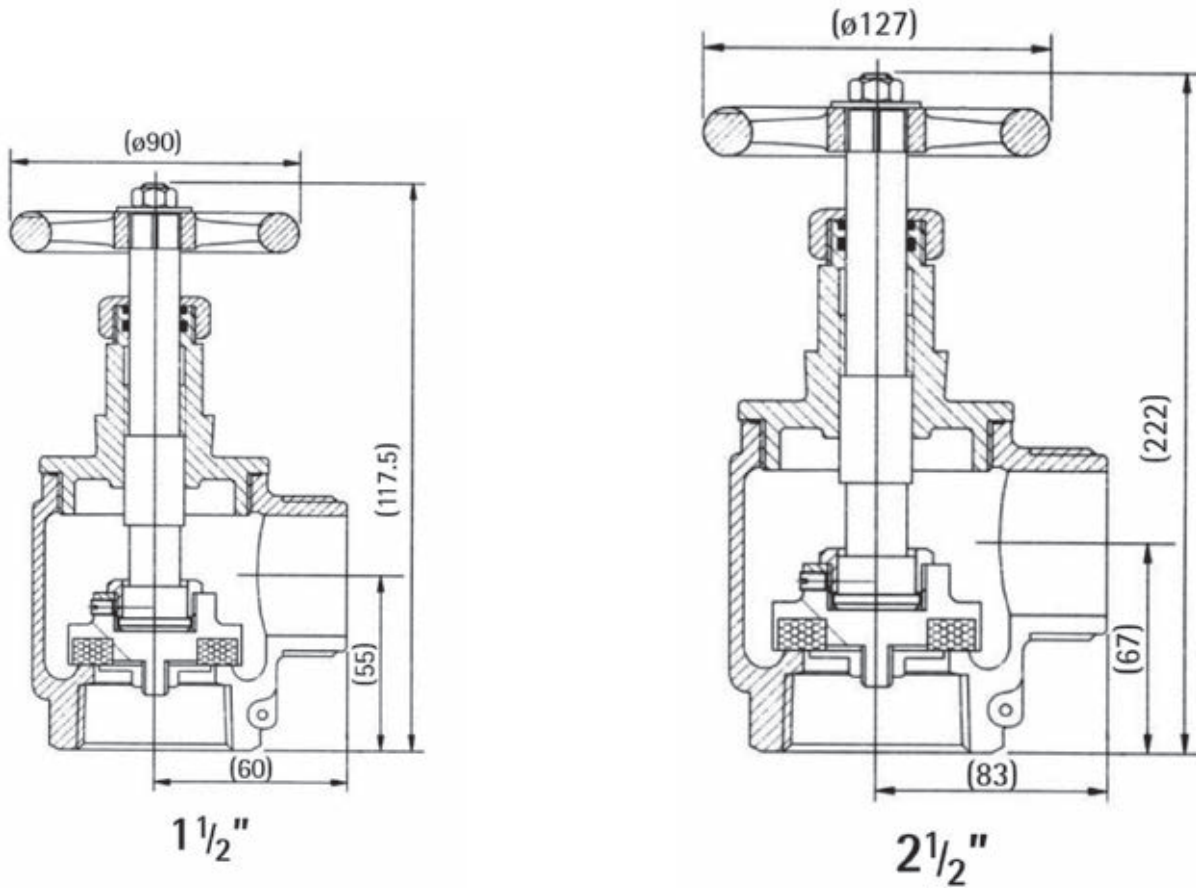
Material Construction:

SR. NO.	DESCRIPTION	MATERIAL	STANDARD
1	Body	Cast Brass	B584 C5700
2	Bonnet	Cast Brass	B584 C5700
3	Stem	Forged Brass	B16 C36000
4	Holder	Forged Brass	B16 C36000
5	Handwheel	Ductile Iron	A536 60-40-18
6	Seat Seal	NBR Compound	#E701N

Angle Valve for Fire Hose



Drawings and Dimensions



Installation:

The hose valve is provided with standard taper pipe threads that conform to ANSI B2.1. Installation of the hose valve is achieved with readily available field tools. Prior to installation, use joint compound or PTFE tape to apply on male threads. Tighten the hose valve on full turn past hand tight, make sure hose valve is aligned according to requirement.

Operation:

Connect a Fire Hose, then slowly open the valve.

CAUTION: Do not bend fire hose. It may cause accidental removal of coupling due to over pressure.

Maintenance:

Regularly inspect the seat for tight shut off. if the valve leaks or requires excessive torque to tighten, replace the disk or disk holder assembly as required.



Since 1983, SFFECO has been a trusted name in fire protection, known for innovation and quality worldwide.

With state-of-the-art facilities in Riyadh and Dubai, we deliver a complete range of firefighting solutions that meet international standards.

Our innovative approach and comprehensive product portfolio make SFFECO the one-stop destination for reliable fire protection products and services.

شركة المصنع السعودي لأجهزة الإطفاء SAUDI FACTORY FOR FIRE EQUIPMENT Co.

FACTORY & HEAD OFFICE - RIYADH

2nd Industrial Area, Al-Kharj Road, Riyadh, KSA, P.O. Box: 58469, Riyadh 11515
Tel : +966 11 2650070, E-mail: riyadh@sffeco.com.sa

JEDDAH BRANCH

P.O. Box: 16769, Jeddah - 21474, KSA
Tel : +966 12 670 6009,
E-mail: jeddah@sffeco.com.sa

DAMMAM BRANCH

P.O. Box: 7162, Dammam - 31462, KSA
Tel : +966 13 8351961,
E-mail: dammam@sffeco.com.sa

MADINAH BRANCH

Tel : 0148660959, 0148283256,
E-mail: madinah@sffeco.com.sa

